



# Webinar Azure Platform Solution: een Azure omgeving zonder zorgen



# Azure Platform Solution



**Rik Delva**

Solution Manager Multi-Cloud

[Rik.delva@inetum-realdolmen.world](mailto:Rik.delva@inetum-realdolmen.world)



**Jonathan Van Beneden**

Project Manager Azure Platform Solution

[Jonathan.Vanbeneden@inetum-realdolmen.world](mailto:Jonathan.Vanbeneden@inetum-realdolmen.world)

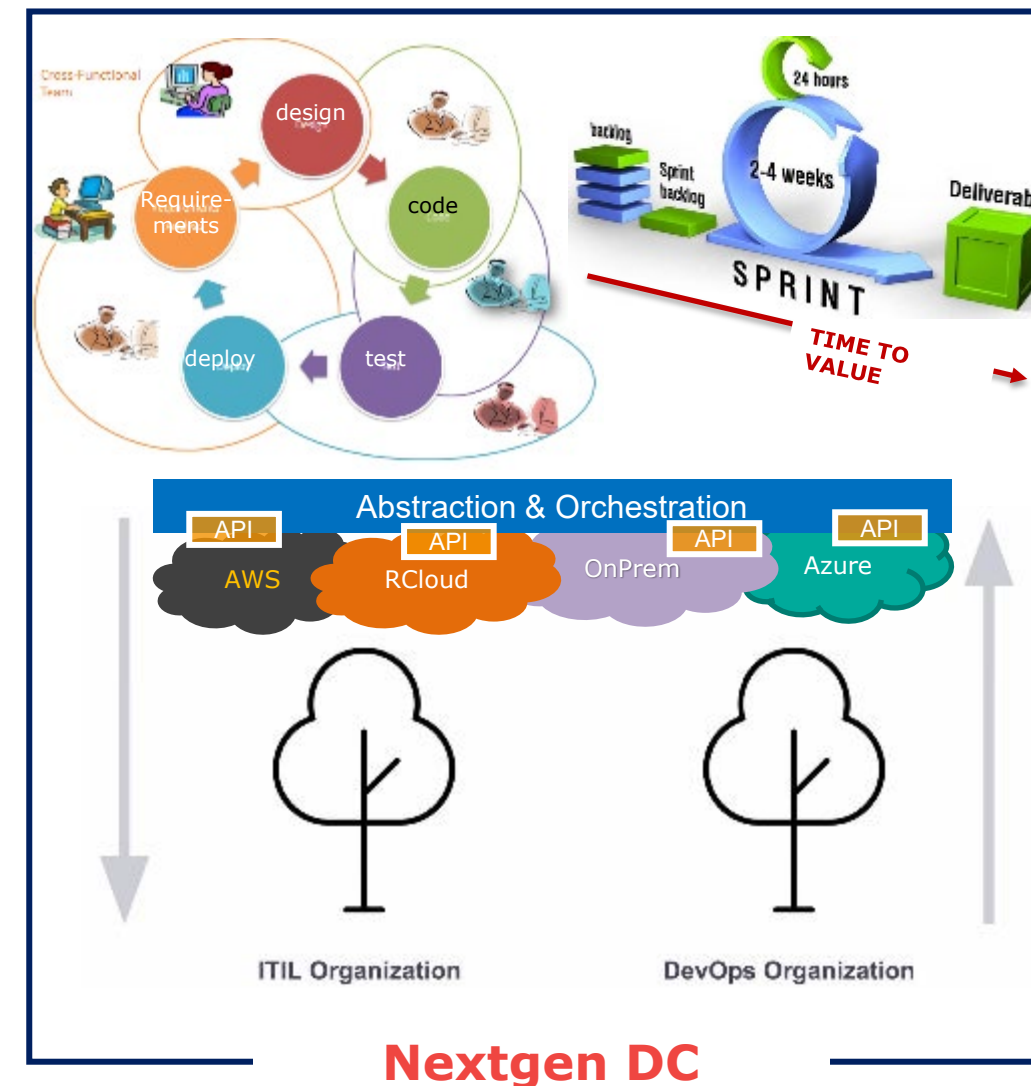
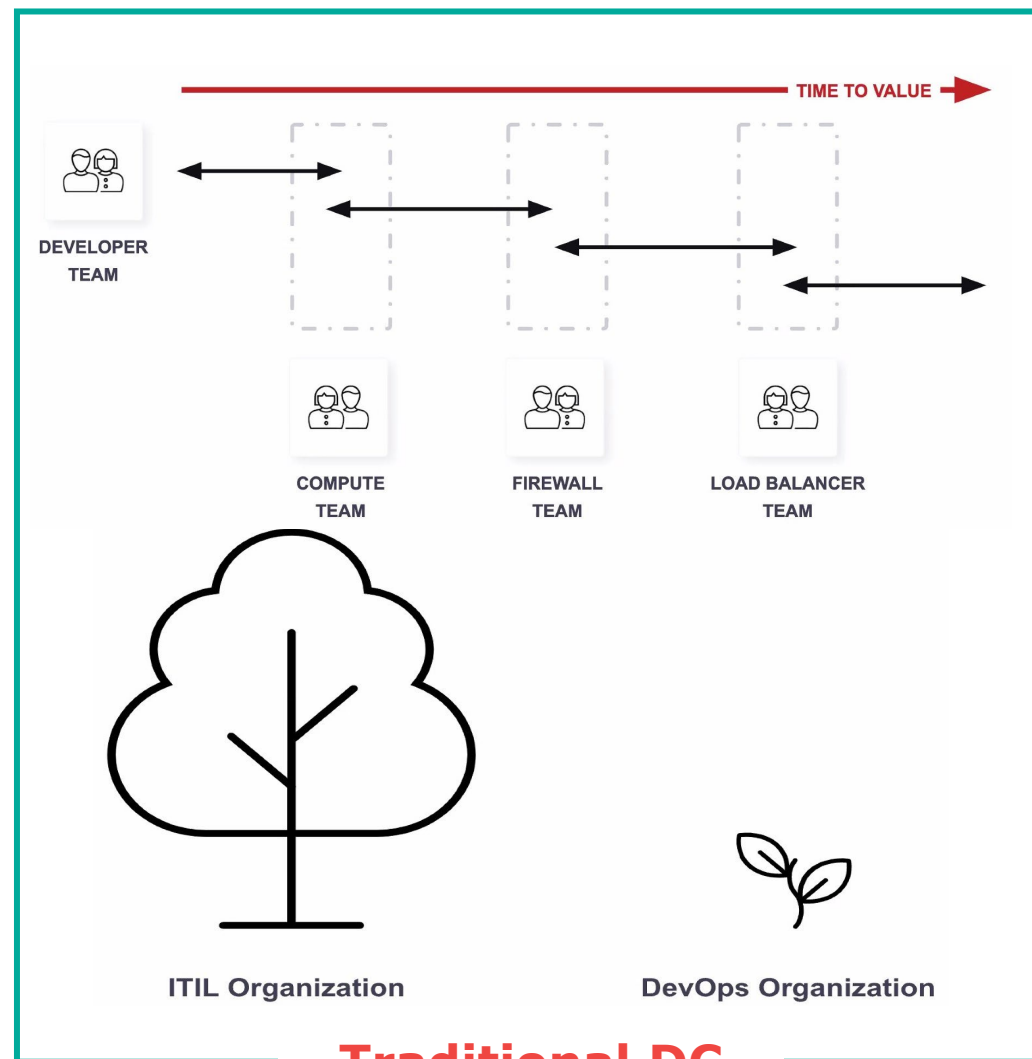


**Jorne De Roeck**

Technical Architect Azure Platform Solution

[Jorne.DeRoeck@inetum-realdolmen.world](mailto:Jorne.DeRoeck@inetum-realdolmen.world)

# The world is changing ...



Dynamic infrastructure:  
agile, IaC, cross-clouds, integrated, secure

## And requires a new IT approach...

# Azure Platform Solution

Cooperation



Flexibility



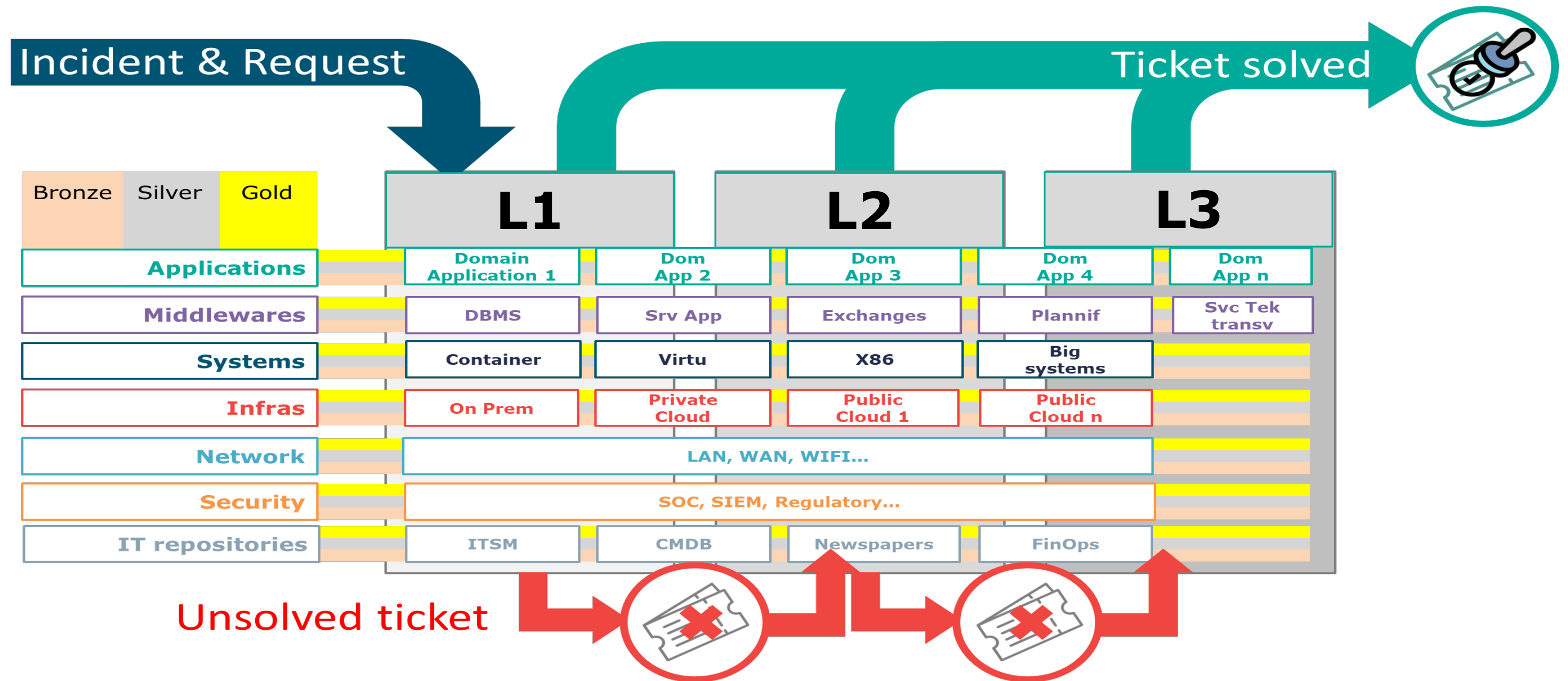
Insights



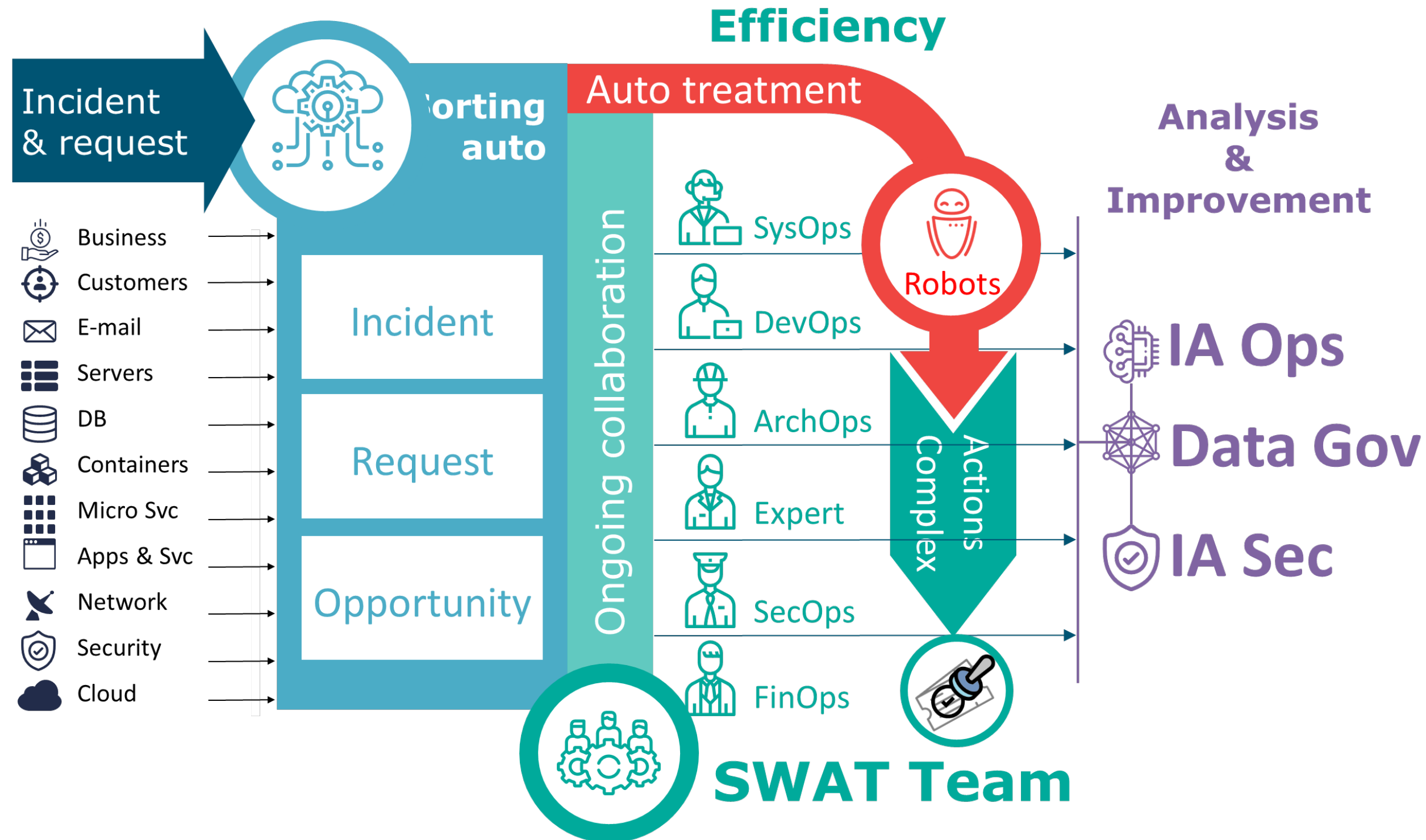
Unburden



# Traditional way of work



# Agile operation teams



# The Azure Platform Solution

Specialized Workloads

Proactive Services

Site Reliability Engineering

Platform layer

# The Platform Layer

*We take operational responsibility, monitor your environment and report about costs and events.*

## Transitioning towards Azure Platform Services

We take over the **operational responsibility** and capture your **requirements** to become your **partner** in the cloud.

## We **MONITOR** your environment

Our platform monitors your cloud environment as a swift **catch & dispatch** system delivers critical alerts to your support team

## We **SUPPORT** your business

You gain access to a **24x7** support system

## We deliver **INSIGHT** into your environment

Our security, financial and service **reports** deliver the correct insights into your environment.



# Site Reliability Engineering

*We use a software approach to IT operations where software is used to manage your systems, solve problems and automate operational tasks.*

## We handle your **INCIDENTS, CHANGES & REQUESTS**

We handle your incidents, changes and requests based on your priorities and needs.

## We **FOCUS** on **AUTOMATION** to improve our services.

Our team will continuously **improve your service** by focusing on automation. In order to **deliver** your **operational requests** more **quickly** and **efficiently**.

## We **OPTIMIZE** your environment to better suit your needs

Your environment will be optimized to fit your needs, with a focus on **reliability, security, cost** and **performance**.

## We empower **FLEXIBILITY**

**Change** is the only constant within the IT landscape, That's why our **service** will **scale** to fit your needs.

# Specialized Workloads

*Our Specialized workloads are standard solutions that extend the capabilities of our Azure Platform Service.*

- **ADVANCED Virtual Machine Service**  
Are you migrating to the cloud and have a lot of **virtual machines**? Let's also handle these Virtual Machines on our **platform**!
- **Easy BACKUP & RESTORE\***  
Do you have **critical** services that need extra attention? Remove stress with our **Backup & Restore** service.
- **Let's focus on PATCHES\***  
Let's keep your virtual environment **up-to-date** with the Patching workload.
- **We'll create extra WORKLOADS to better suit your needs**  
Our team will focus on **creating** the right puzzle pieces in order to better **support** your environment.

(\* ) These features require Advanced VM Monitoring

# Proactive Services

*Our proactive operations are performed on a recurring basis and is tuned to your cloud subscription. This will result in advice in order to improve your environment and create an SRE roadmap for your cloud.*

## ■ Need some **ARCHITECTURE** guidance?

Through **in-depth knowledge** of your business and cloud environment, our **architect** can provide **recommendations** to ensure that you take the right decisions for your **cloud roadmap**.

## ■ Correct **POLICIES** can enforce your corporate standards.

Policy Management provides **automated guardrails** to keep **deployments** and **configurations** in line with corporate standards for different scenarios

## ■ We will help you **OPTIMISE** your cloud.

Cloud Optimisation Service analyses your resource configurations and usage telemetry to recommend optimisations with a focus on reliability and performance.

## ■ Want more control on cloud **COST**?

You will be able to **monitor** your cloud spending and resource usage and receive cost lowering **recommendations**.

## ■ Tighten down your **SECURITY**.

Gain more **insight** with our security management solution based on your security **policies** and **remediation** activities.

# The Azure Platform Solution

Projects

Specialized Workloads

Proactive Services

Site Reliability Engineering

Platform layer

# Projects

*The experts in our team are specialized in your environment. No one is better suited to handle your projects.*

## Cloud experts working within the **CONTEXT** of your environment.

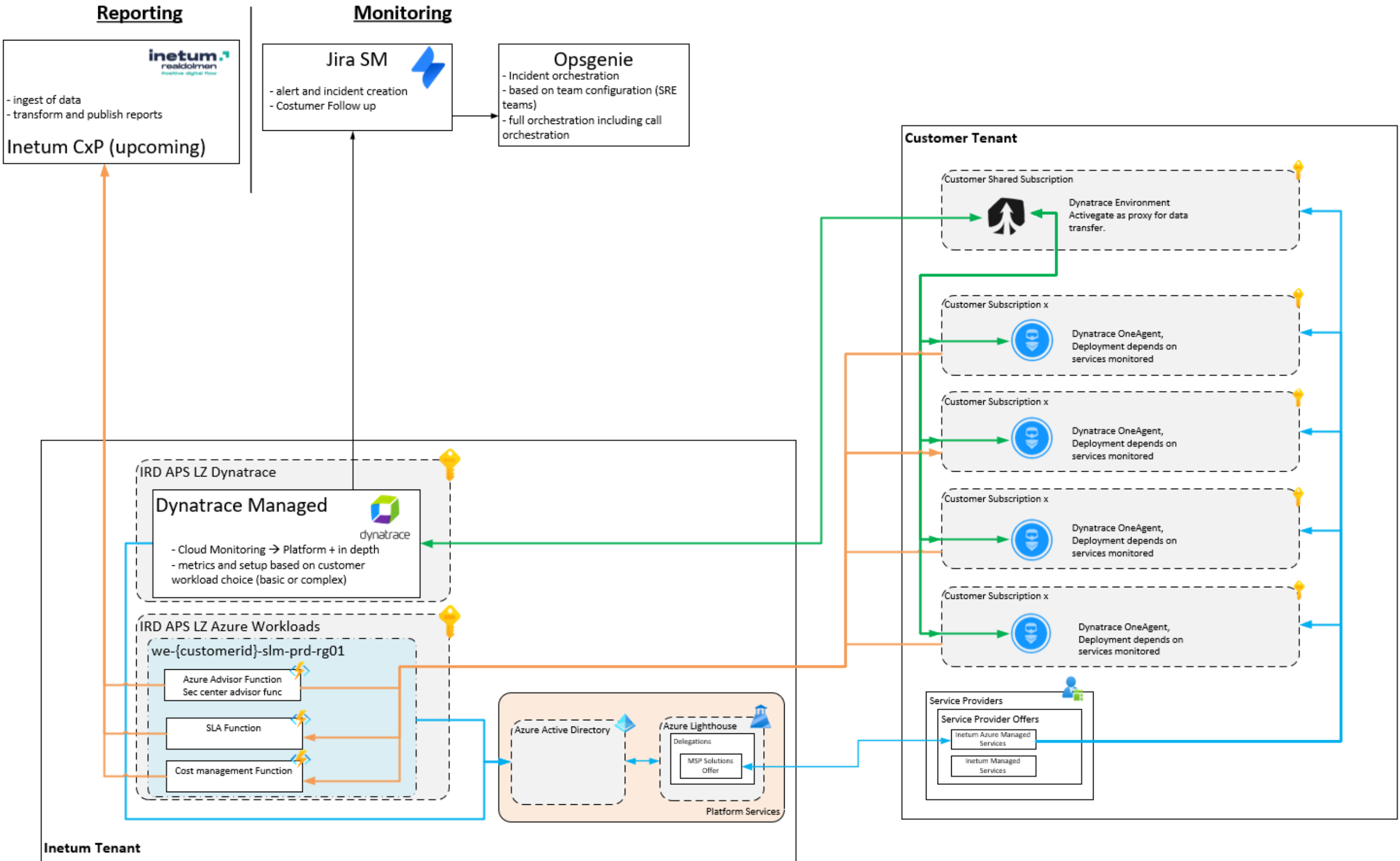
Our cloud **experts** are ready for your projects. They are equipped with deep **knowledge** about your **existing environment** and will execute your projects to fit perfectly within your cloud environment.

## Cloud Migrations with ease, from **BUILD** to **RUN** in one step.

**Migrate** your existing virtual machines to **native cloud solutions**, with the added bonus of our **Azure Platform Service** monitoring system.

## A gateway into **Inetum-Realdolmen**

A larger Inetum-Realdolmen powered **ecosystem** is waiting for you. **Experts** from different domains can travel towards your team to assist in your projects and share knowledge.



# Azure Lighthouse

## Inetum Platform Services

Details Role assignments

### Role assignments

The groups/users/service principals shown here from Azure Active Directory have access to your delegated resources.

7 items

Display Name	Principal Id	Role	Access Type	Multi-factor authentica...	Service Provider Appro...
ird-aps-mspdt06-cust-sg-contributor	42880f80-d520-477d-a5dd-4ea01a300cbf	Contributor ⓘ	Permanent	N/A	N/A
ird-aps-mspdt06-cust-sg-MspDeleteRole	b7dfbbb8-2555-40de-bdf2-9b7081c2a8da	Managed Services Registration assignment Delete Role ⓘ	Permanent	N/A	N/A
ird-aps-mspdt06-cust-sg-reader	956c0fe6-0ad7-4714-bb21-00fbb58abe24	Reader ⓘ	Permanent	N/A	N/A
ird-aps-mspdt06-cust-sg-TagContrib	bb50f912-81f1-448d-8d3b-4686624c07b8	Tag Contributor ⓘ	Permanent	N/A	N/A
ird-aps-mspdt06-cust-sg-TagContrib	bb50f912-81f1-448d-8d3b-4686624c07b8	Security Reader ⓘ	Permanent	N/A	N/A
ird-aps-mspdt06-cust-sg-TagContrib	bb50f912-81f1-448d-8d3b-4686624c07b8	Cost Management Reader ⓘ	Permanent	N/A	N/A
ird-aps-mspdt06-cust-sg-vmContributor	db8c87fa-91b6-4008-969b-97b17a76d578	Virtual Machine Contributor ⓘ	Permanent	N/A	N/A

Customer Dashboard

Owned by [User] No tags applied > Edit

### Environment Health

Problems 2/2

#### Host health

All fine 30

### Azure

#### Azure Logic App

<b>Actions started</b> 0.008 /min LA.Scheduled.W...	<b>Actions completed</b> 0.008 /min LA.Scheduled.W...	<b>Action latency</b> 	<b>CPU percentage</b> 
<b>Actions succeeded</b> 1 LA.Scheduled.Webjobs.PROD 1 LA.Scheduled.Webjobs.TST	<b>Actions failed</b>  No data available Change timeframe, management zone or other filters.	<b>Data in</b> 	<b>Runs started</b>
<b>Runs completed</b>	<b>Run latency</b>	<b>Data out</b>	



# Welcome to the Intetum-Realdolmen Help Center

Find help and services



Welcome! You can raise an APS Service Desk request from the options provided.

## Contact us about

### **Raise a question / Report a problem**

Ask questions about the platform tools, Report a problem



### **Governance**

Subscription, Resource Group, Key Vault, Azure Active Directory



### **Compute**

Virtual Machine Scale Set, Virtual Machine



### **Storage**

Storage Account, Netapp, File Sync Service, File Share



### **Network**

Virtual Network, User Defined Route, Network Security Group, Application Gateway Rules, Application Gateway



Help Center / APS Servicedesk



## APS Servicedesk

Welcome! You can raise an APS Service Desk request from the options provided.

Contact us about

Compute



### What can we help you with?



#### Virtual Machine Scale Set

Request an action related to Azure Scale Sets



#### Virtual Machine

Request an action related to Azure VM



- |  |  |                                  |                             |                                      |  |                        |
|--|--|----------------------------------|-----------------------------|--------------------------------------|--|------------------------|
| Hybrid cloud observability             | Hybrid cloud distributed tracing               | Run-time vulnerability detection | Mobile, web browser and API | Real-time business insights          | Closed-loop remediation                  | Ecosystem integrations |
| Fault domain isolation                 | Automatic code-level root-cause and profiling  | Impact analysis                  | Feature adoption analysis   | Impact and conversion                | Quality gate, service level and delivery | Custom solutions       |
| Serverless, container, pod and network | Front- & back-end availability and performance | DevSecOps automation             | Visual session replay       | BizDevOps integration and automation | DevOps, SRE lifecycle                    | API programmability    |

- Infrastructure Monitoring
- Applications & Microservices
- Application Security
- Digital Experience
- Business Analytics
- Cloud Automation
- Dynatrace Hub

**dynatrace Software Intelligence Platform**

- OneAgent
- PurePath
- Smartscape
- Davis AI incl. AIOps
- Hyperscale

SaaS and Managed

- Traces
- Metrics
- Logs
- +
- Topology
- Behaviour
- Code
- Metadata
- Network
- +
- API
- OpenTelemetry
- keptn

**600+**  
Supported technologies

- Kubernetes
- OpenShift
- AWS
- Azure
- GCP
- Tanzu
- Enterprise
- Hybrid cloud

Automatic and intelligent observability

Broadest multcloud and technology support

Figure 1: Magic Quadrant for Application Performance Monitoring and Observability



"It is an honor to be recognized by industry analysts like Gartner. To be recognized for the 12<sup>th</sup> time, we believe, is a testament to our durable innovation and ability to anticipate the market and our customers' needs in a sea of change."



**Steve Tack**  
SVP of Product Management and Dynatrace

# ! Problems

Auto-refresh every 1 min

Pin to dashboard

## Status

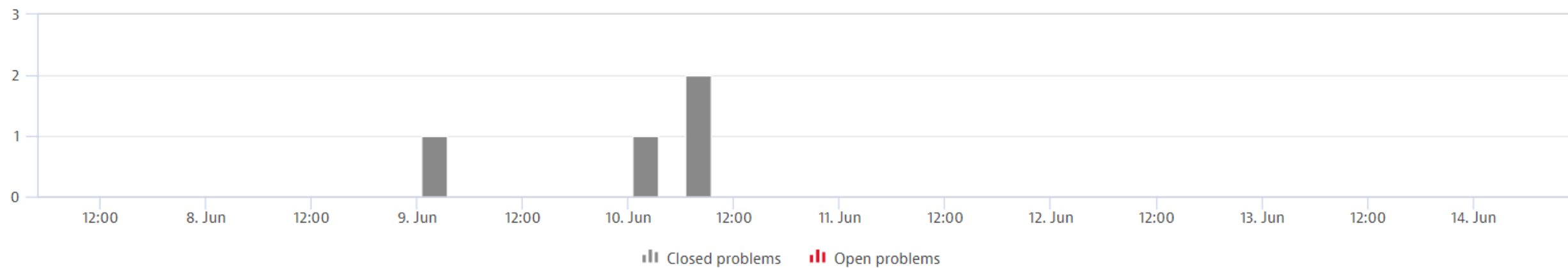
- Any
- Open
- Closed

## Severity

- Monitoring unavailable
- Availability
- Error
- Slowdown
- Resource
- Custom

## Impact level

- Infrastructure
- Services
- Application
- Environment



## 4 Problems

Problem	Impacted	Affected	Root cause	Start date	Duration	Alerting profiles
Network problem P-220623: Error		1		Jun 10 11:13	5 min	IR Service...
Multiple infrastructure problems P-220622: Availability		1		Jun 10 09:09	1 h 5 min	IR Service...
Network problem P-220621: Error		1		Jun 10 05:34	< 1 min	IR Service...



Affected applications

-



Affected services

-



Affected infrastructure

1



DAVIS<sup>®</sup>

analyzed dependencies  
across 750 monitored entities

## 1 impacted infrastructure component

jetty//

Process

Network problem

Packet retransmission rate for process on host has increased to 45 %

## Comments

Add comment

No comments posted

## Root cause

Based on time correlation and analysis of all transactions that use these components, this issue has the following root cause

jetty//

Process Group

**Network problem**

Packet retransmission rate for process has increased to 45 %

**Metric anomalies detected**

Review the metrics which show abnormal or outlying behavior.

Retransmission base sent

**+ 102 /s**

Now

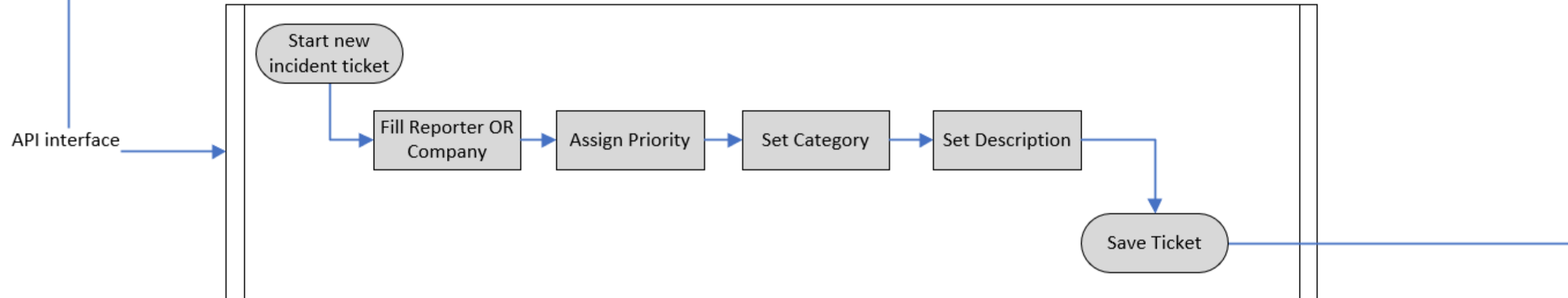
Before

Analyze metric anomalies

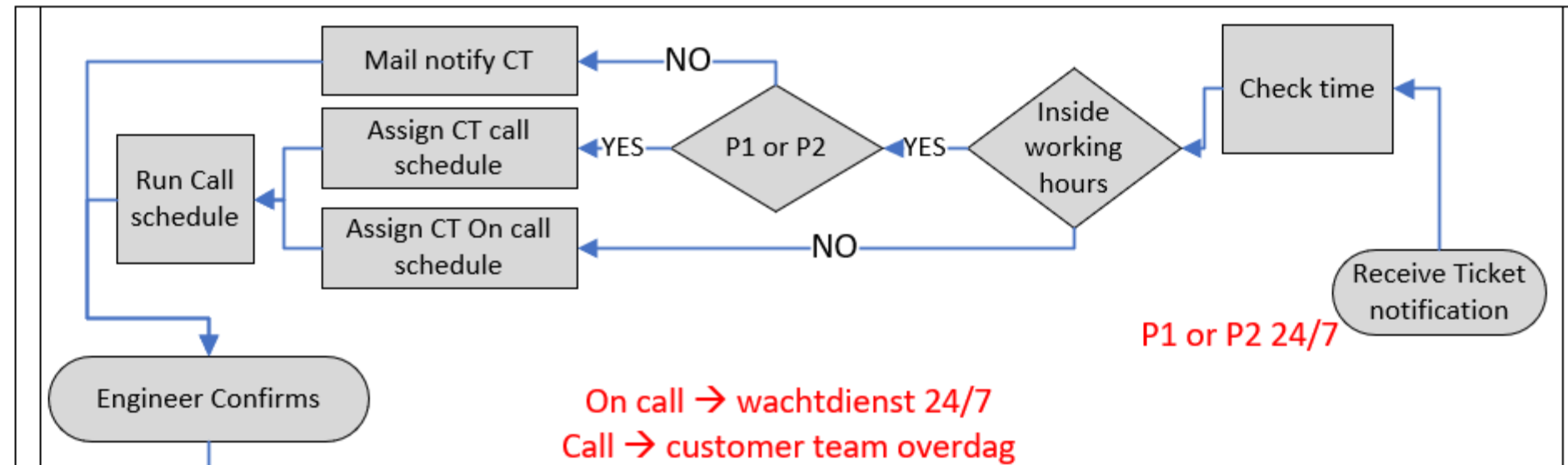
# Dynatrace incidents

Dynatrace Incident

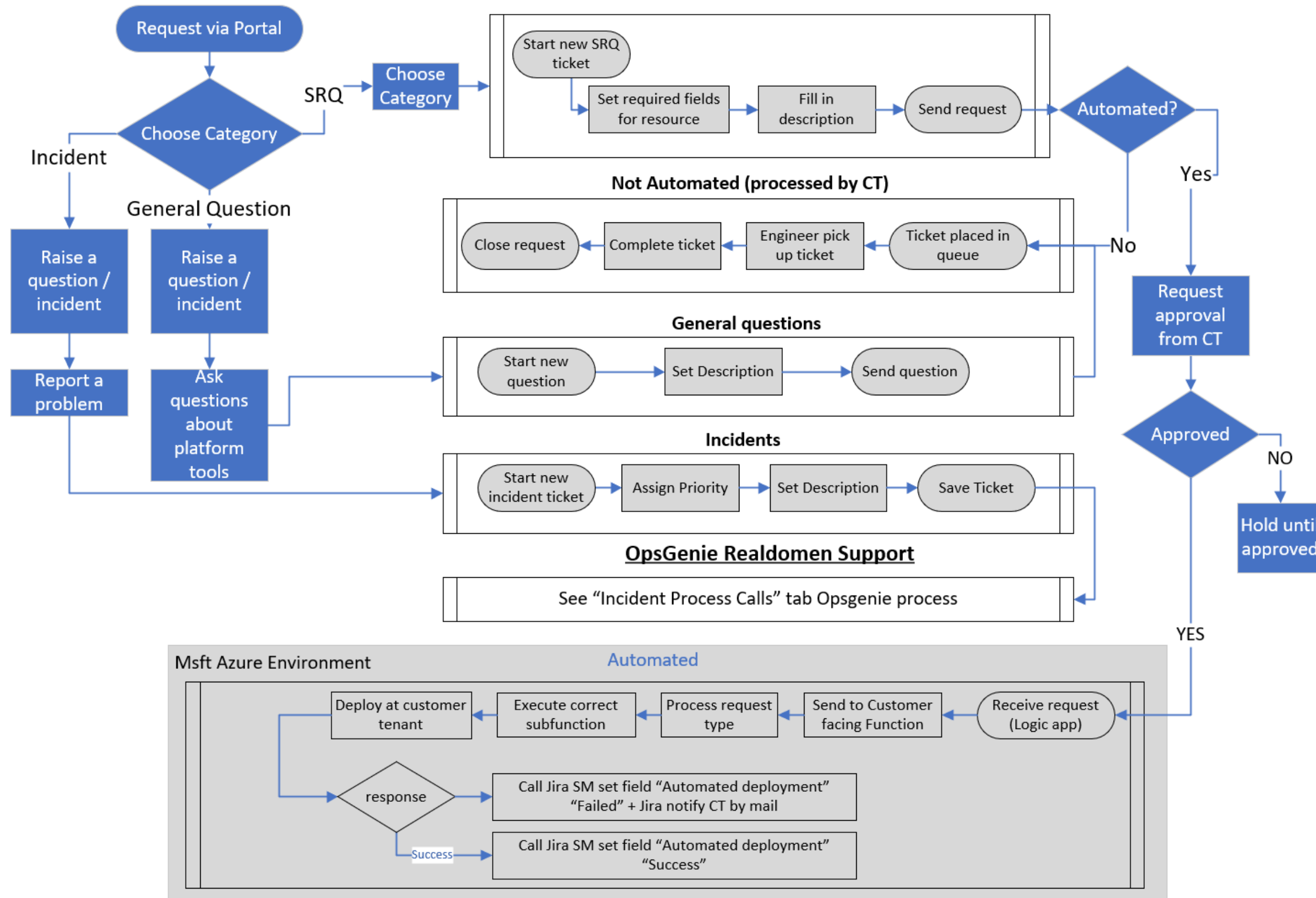
## Jira SM API interface



## OpsGenie Realdomen Support



# Requests Jira Service Management





# The Azure Platform Solution

Projects

Specialized Workloads

Proactive Services

Site Reliability Engineering

Platform layer

**inetum**   
realdolmen  
Positive digital flow

**inetum.world**

FRANCE | SPAIN | PORTUGAL | BELGIUM | SWITZERLAND | LUXEMBOURG | ENGLAND |  
POLAND | ROMANIA | MOROCCO | TUNISIA | SENEGAL | CÔTE D'IVOIRE | ANGOLA |  
CAMEROON | USA | BRAZIL | COLOMBIA | MEXICO | RP OF PANAMA | PERU | CHILI |  
COSTA RICA | DOMINICAN REPUBLIC | ARGENTINA | SINGAPORE | UAE

