

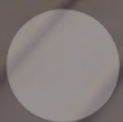
A blurred photograph of a modern office lobby. In the center, a woman sits cross-legged on the floor, working on a laptop. She has a yellow folder next to her. Several other people are walking through the lobby, their figures blurred to suggest movement. The floor is light-colored and tiled. In the background, there is a large window or glass wall filled with white pebbles.

To get there, together



REALDOLMEN
a Gfi Group company

INTRODUCTION



ROUND TABLE // WHO'S WHO



Tom Vanderstraeten

Team Lead *Teams & Skype for Business*

@ Realdolmen since 01/2015

+8 years experience in voice solutions

Married

2 beautiful children

Travel - Mountainbike

Tom.vanderstraeten@realdolmen.com

Direct : +32 2 801 45 09



Audience

Experience with O365/MS Teams?

Expectations for today?



WHAT IS TEAMS

WHAT IS TEAMS // THE HUB FOR TEAMWORK IN OFFICE 365



Chats



Meetings



Calls



Files



Apps and workflows

The screenshot shows the Microsoft Teams application interface. On the left is a dark navigation sidebar with icons for Activity, Chat, Teams (highlighted), Calendar, Calls, Yammer, Files, Returns, and Apps. The main content area is divided into two panes. The left pane, titled 'Teams', lists 'Your teams' including 'Warehouse #02' (with sub-items: General, Incoming Orders, Return Approvals - Shift Managers, Returns, Shipping Updates) and 'Research' (with sub-items: General, Documentation, Guidelines, News, Ongoing Projects). Below these are 'Occupational Safety' (with sub-items: General, Emergency Procedures, OSHA Training and Information, Safe Lifting and Best Practices), 'Company Events' (with sub-items: General), and 'Company Party' (with sub-items: Founders Day, Winter Holidays). At the bottom of this pane is a 'Join or create a team' button. The right pane shows a 'Returns' team with tabs for Posts, Files, Wiki, Flow, Returns App, and Returns PowerBi. The main content area features a large background image of a warehouse with a 'Hello, Aya' greeting and a circular profile picture of a woman. A white overlay box contains three red buttons: 'Check Stock', 'Process Returns', and 'Approvals'. At the bottom right, a map shows the location '16031 NE 36th Way' with a red location pin.

WHAT IS TEAMS // TEAMWORK ACROSS SPACES AND DEVICES



Individual Workspaces

Individual office or dedicated workspace
On the go or in transit
At home



Group Workspaces

Small, medium and large meeting rooms
Huddle/Focus spaces and touchdown spaces
Collaboration workspaces



Personal Devices



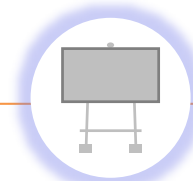
Audio & Video
Peripherals



PCs and Mobile



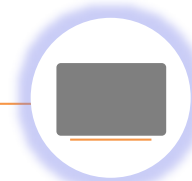
IP Phones



All-in-one
Collaboration Devices



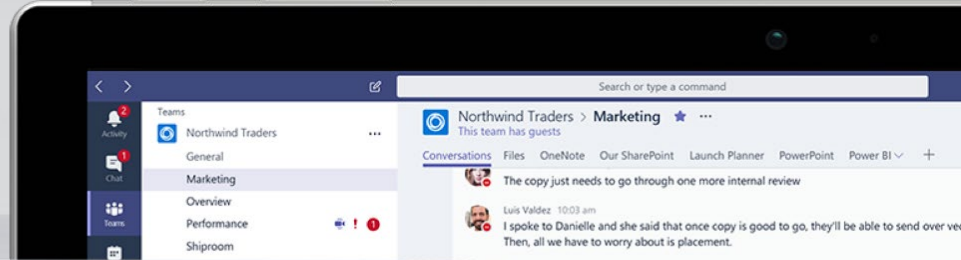
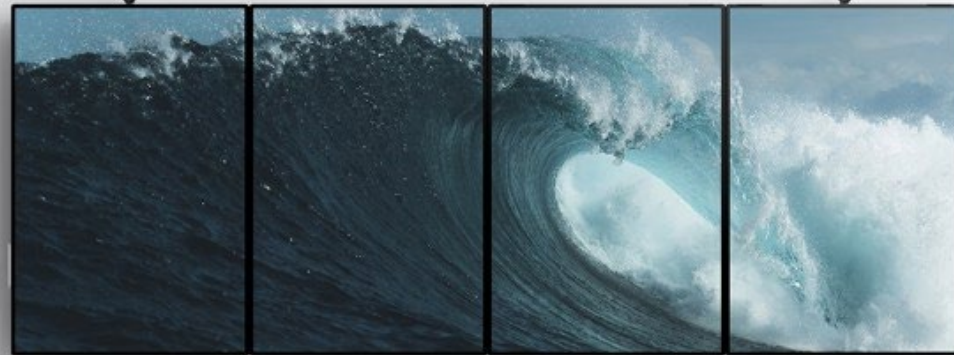
Room
Systems



Large Screen
Displays

Shared Devices

WHAT IS TEAMS // ON ANY DEVICE



To get there, together



REALDOLMEN



HQ Realdolmen Huizingen

A. Vaucampsiaan 42

B-1654 Huizingen

+32 2 801 55 55

www.realdolmen.com