

Morning Update

**Maak van elke plaats uw
ideale werkplek met
Lenovo**

LenovoTM



INETUM – LENOVO WEBINAR 27/01/2022

Agenda :

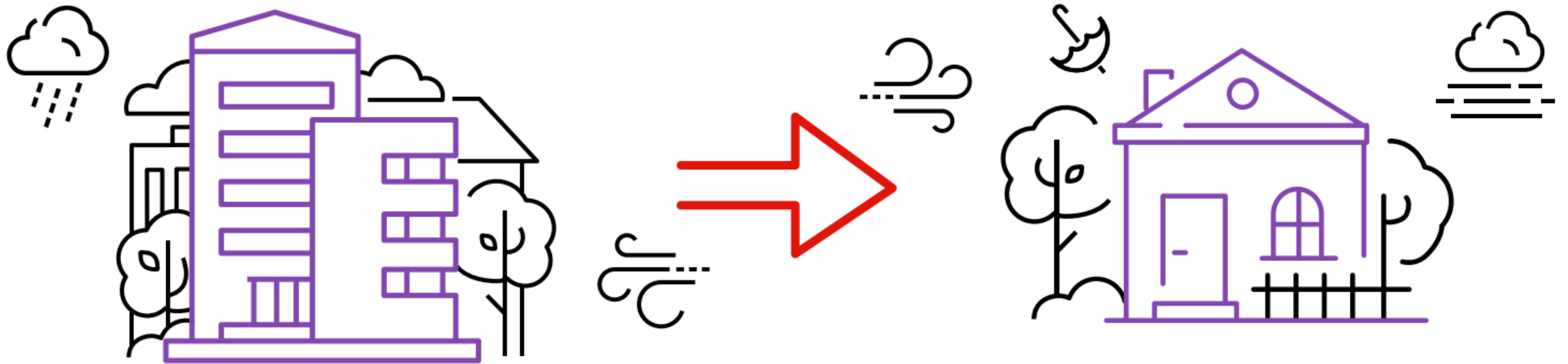
Lenovo Hybrid Workplace : how to turn any space into a productive and secure workspace, whether you are at home, in office, or on the go.

Lenovo Sustainability : The Promise for a Greener World

Collaboration for a distributed workforce

Balance remote and together
for your hybrid employees

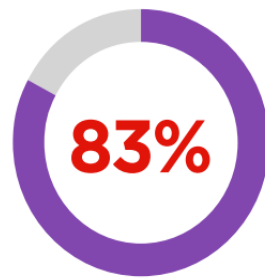




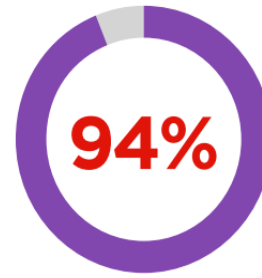
In 2020, companies were catapulted out of the traditional workplace. Working from home became the new normal.

Remote work works

Employers

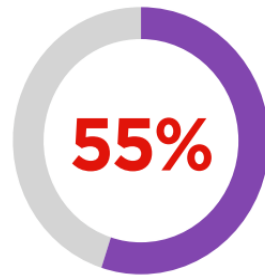


remote work is a success.¹

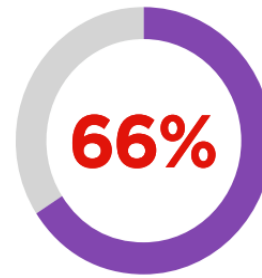


productivity is same or better.²

Employees



prefer remote 3+ days a week.¹



feel more productive from home.³

But there's still room to improve communication

Staying connected is a must for employees.



Employees miss...⁴

social interactions



45%

face-to-face meetings



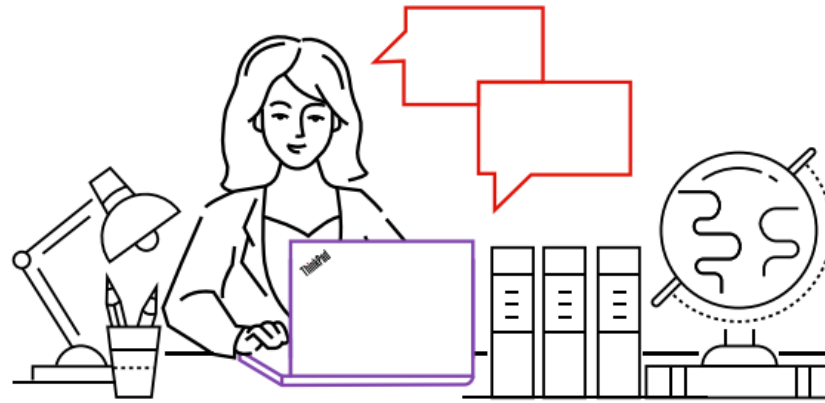
41%

ThinkPad

Lenovo

Better collaboration ahead!

Welcome to the new best of both worlds: hybrid work.



The vast majority of



knowledge workers prefer a hybrid approach.⁵



companies plan on some remote work.⁶



Your employees expect seamless, simple, secure collaboration in the office and at home.

ThinkPad

Lenovo

Lenovo

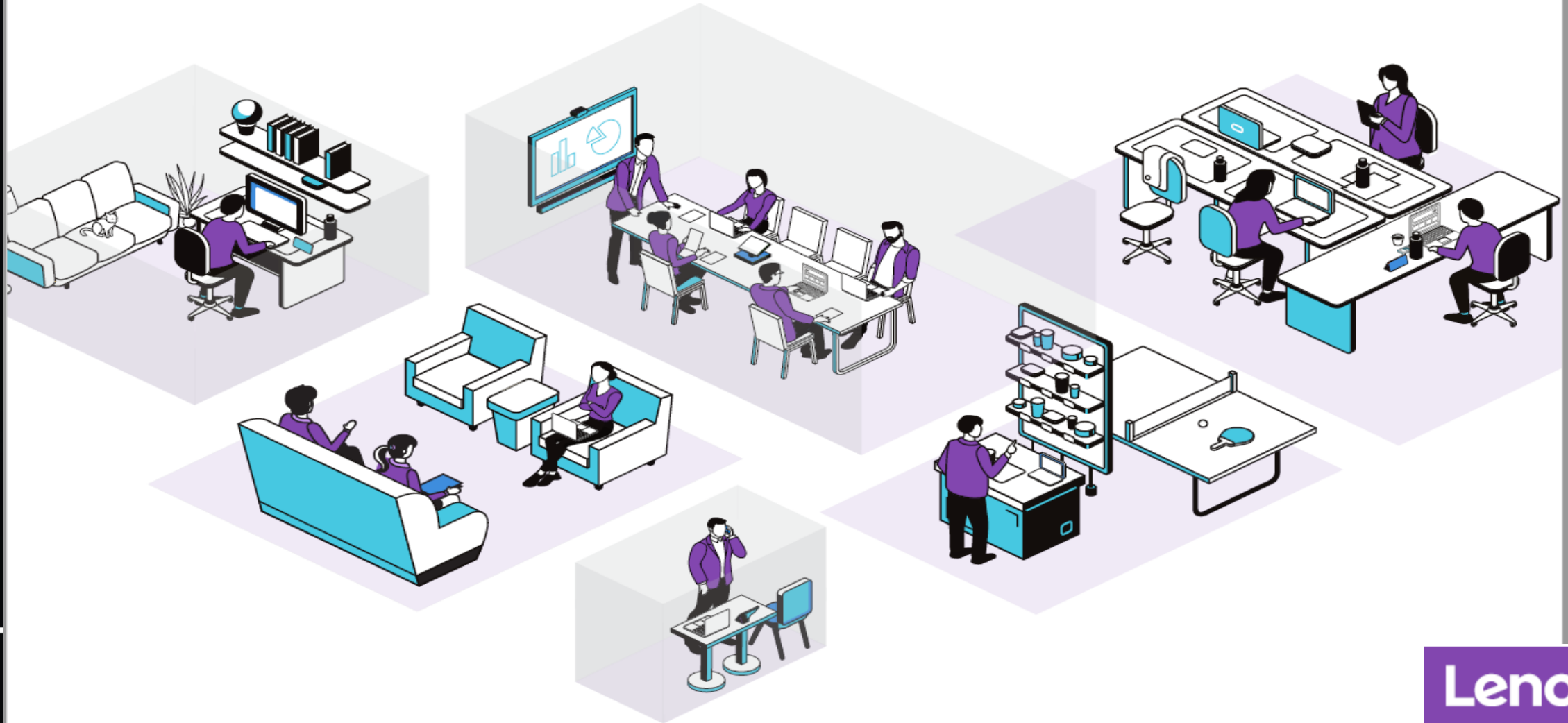
Creating the office of the (hybrid) future

Collaboration takes center stage as
enterprises embrace flexible work



“Leading organizations will boldly question long-held assumptions about how work should be done and the role of the office.”

McKinsey¹





In the new hybrid work world, traditional offices are transforming. While employees like working from home, **87% say being onsite is important for collaborating with team members and building relationships.**²

Here's how yesterday's office is becoming today's hub of co-creation, with different environments and purpose-built technology to match all the ways your workforce collaborates.

The reimagined workplace

1

Private focus and quiet collaboration: Phone booths and pods

Employees need deep thinking spaces:

- Personal collaboration device
- UC platform like Microsoft Teams
- Laptop



The reimagined workplace

2

Casual collaboration or solo work: Informal spaces

- Laptop/tablet



The reimagined workplace



3

Scheduled in-person/ remote collaboration: Team meeting spaces

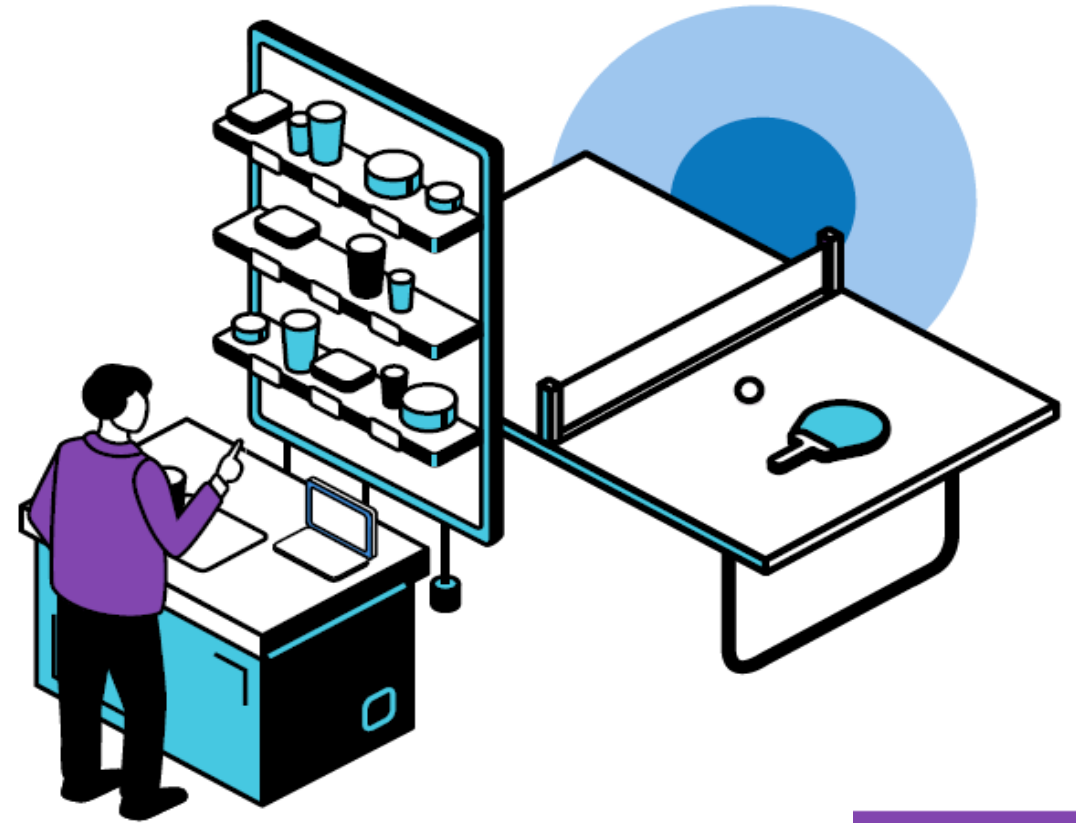
- Room system like ThinkSmart Hub
- UC platform
- Camera and sound bar
- Laptop/tablet

The reimagined workplace

4

Social connections: Downtime activities and snacks

45% of remote workers
miss social connections.³



The reimagined workplace



5

Side-by-side work: Hot desking workstations

- Desktop/laptop/tablet
- Personal collaboration device
- UC platform

The reimagined workplace

6

Remote collaboration: Work from home

66% of employees say they're more productive working from home.⁴

- Desktop/laptop/tablet
- Personal collaboration device
- UC platform



Ready to reimagine your workplace?

Lenovo, Microsoft, and the Intel® Evo™ vPro® platform
deliver the best thin and light laptop experience
for highly mobile business users.¹





Smarter
technology
for all

Lenovo

**Connect with Lenovo. We're experts
at breaking down barriers and building
smart solutions. When you're ready,
we're here to help.**

Contact your Lenovo Account Representative
or local Business Partner.

Visit www.lenovo.com/FlexibleWorkforce

Lenovo

WORKPLACES ARE CHANGING

Studies* reveal that half of IT Decision Makers are familiar with the term hot-desking/hoteling. Companies are warming up to open-offices and implementing solutions to enable remote work and flexible work hours. This is helping them reduce square footage and lower real estate costs.

An increasing portion of the workforce conducts business outside the traditional office setup. They intend to work in public, in locations like coffee shops, restaurants, or even on flights and look for opportunities that offer this flexibility.

*2019 Lenovo customer insights on changing workspaces

ThinkPad

A man and a woman are looking at a laptop screen together. The man is pointing at the screen, and the woman is looking at it. The laptop screen shows a website with various images and text. The background is a blurred office setting.

49%

companies are
moving to open
office or some
portion of it

On average, workers now spend...


Lenovo

Among global workers...

 **45** % of time working with others

 **45** % of time working alone

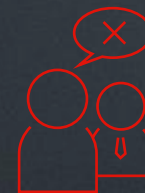
 **52** % report WFH at least once per week

 **18** % report working remotely full-time

ThinkPad

CHALLENGES OF WORKING REMOTELY

Working in remote locations often impacts productivity in more ways than one. Frequent distractions can lead to reduced concentration, miscommunication, and have an impact on the professionalism, hampering productivity. Users need to hear things clearly to put their points across when conducting an urgent business call from busy work areas. There is a need for devices to help them stay focused even when they are conferencing in bustling environments.



Miscommunication



Reduced Focus



Unprofessionalism

CHANGING PURCHASE BEHAVIOR

Users who work remotely prefer thinner and lighter accessories for easy portability when traveling.

They are also willing to purchase multi-purpose accessories that provide versatile connectivity and can be easily switched between devices to facilitate multi-tasking.

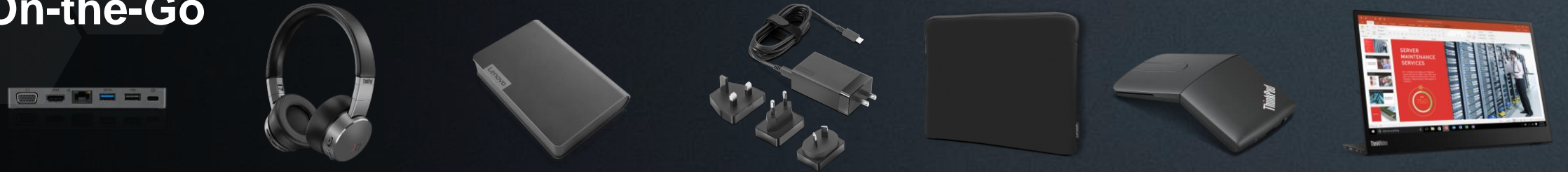
Lenovo

Lenovo Solutions for the Hybrid Office

ThinkPad



On-the-Go



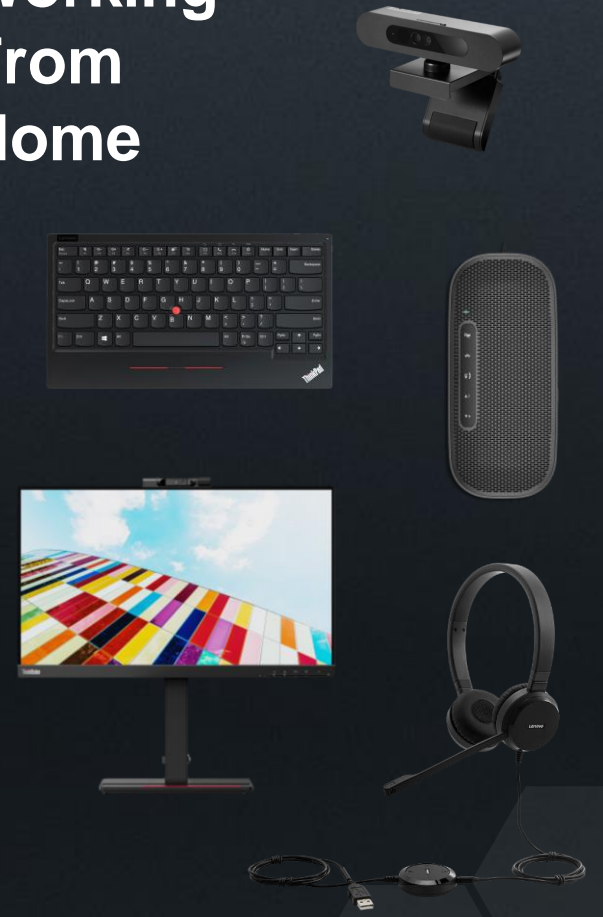
For the Office



ThinkPad



Working From Home



Lenovo

2022 Commercial Notebook Portfolio

Lenovo V

ThinkBook

ThinkPad

EDU

TB 16p G3 refresh	TB Plus Gen2 extend
TB 16 G4+ NEW	TB 13x G2 cleansheet
TB 15p G2 extend	TB 14s Yoga G2 refresh
TB 15 G4 refresh	TB 13s G4 cleansheet
TB 14 G4+ NEW	
TB 14 G4 refresh	

V17 G3 refresh
V15 G3 refresh
V14 G3 refresh

X1 Series

X1 Carbon refresh	X1 Yoga refresh	X1 Nano refresh	X1 Titanium extend	X1 Extreme refresh
--------------------------	------------------------	------------------------	---------------------------	---------------------------

X Series

X13 refresh	X13 Yoga refresh	X13s WoS NEW	X12 Detachable extend
--------------------	-------------------------	---------------------	------------------------------

T Series

T16 cleansheet	T14 cleansheet	T14s cleansheet
-----------------------	-----------------------	------------------------

L Series

L15 cleansheet	L14 cleansheet	L13 cleansheet	L13 Yoga cleansheet	C14 NEW
-----------------------	-----------------------	-----------------------	----------------------------	----------------

E Series

E15 refresh	E14 refresh
--------------------	--------------------

X1 Fold extend

TP 11e Yoga extend

13w NEW

14e 14w Extend

500e 500w Extend

300e 300w Extend

100e 100w refresh

10e 10w NEW



2022

New ThinkPad Series

ThinkPad Cleaning and Disinfection

Active Ingredients Tested for Use

Yes - Acceptable	No - Do Not Use
Alcohols (Isopropyl less than 70%)	Chlorines
Peroxides (diluted concentration up to 3%)	Iodophors
Quaternary Ammonium Compounds (tested in solution only)	Phenolics
Peracetic Acid (tested in solution only)	

Untested

Ethylene Oxide (EtO)	Formaldehyde / Glutaraldehyde
----------------------	----------------------------------

Based upon Guideline for Disinfection and Sterilization in Healthcare Facilities (2008)



Centers for Disease Control and Prevention
CDC 24/7: Saving Lives, Protecting People™

How to clean your device

Smarter
technology
for all

Lenovo

- 1 Remove any debris (crumbs, etc) by gently turning upside down or using compressed air.
- 2 Apply cleaning agent* to lint free towel or cloth.
- 3 Wring excess liquid out of the towel or cloth.
- 4 Wipe down all surfaces & allow to dry for time required on cleaning agent label.
- 5 Wipe off remaining liquid and residue from device.

*Recommended: Isopropyl alcohol; Do NOT use: Chlorine or Bleach



We recommend testing any cleaning, disinfecting or sanitizing products on the bottom (D cover) of ThinkPad before use. Be cautious of using excessive solution on the display panel. These products may leave a residue. Wiping the display after cleaning, sanitizing or disinfecting with a clean cloth may help reduce clouding effects of these agents.

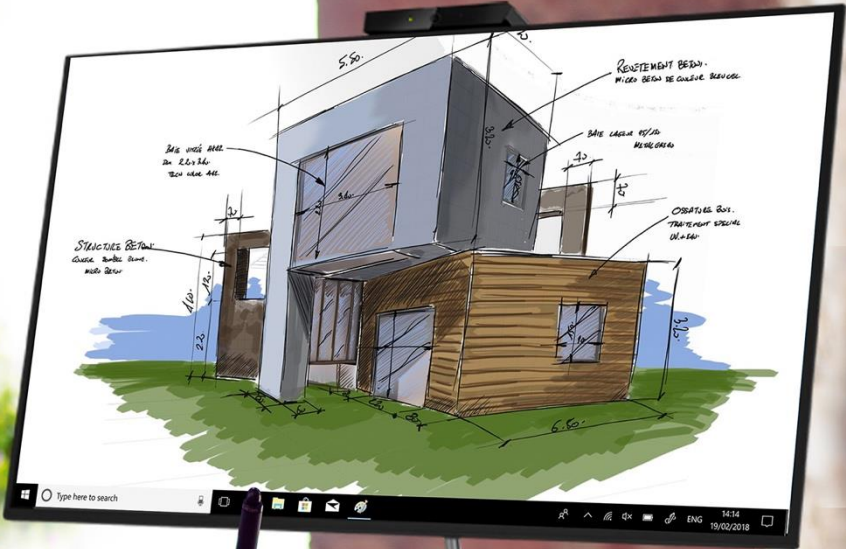
<https://support.lenovo.com/in/en/solutions/ht035676>

https://lenovobeijing.sharepoint.com/sites/LenovoCentral/Pages/News.aspx?news_id=4NEvf61tRh2AIBATIEGLVv

Lenovo

Desktop Solutions for the Hybrid Office

Working from Home & Mobile Office



Lenovo ThinkCentre Tiny & Nano

Ultra-small, powerful, and versatile, the ThinkCentre M90n-1 Nano is here to take the desktop standard to a whole new level of convenience. Powered by the latest generation Intel® processors and backed by SSD storage it makes everyday computing effortless.

The 0.35L M90n-1 Nano is 65% smaller than a ThinkCentre Tiny and can easily fit in any office environment. Compatible with Tiny-in-One (TIO), USB Type-C docks, and monitors, the Nano can give your business a much-deserved shot in the arm.



Smarter
technology
for all

Lenovo

Work From Home with ThinkCentre NANO

- Use larger screens at home
- PC hidden from sight to avoid inadvertent actions of others
- Easy to take PC back to office

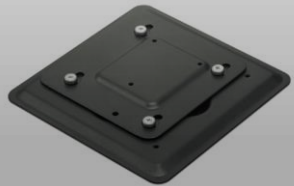
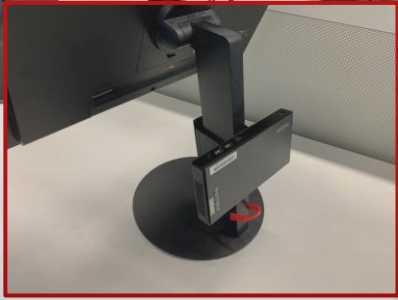
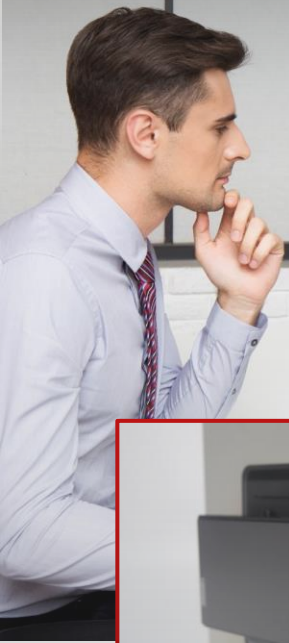


Use Case | **Regular Business**

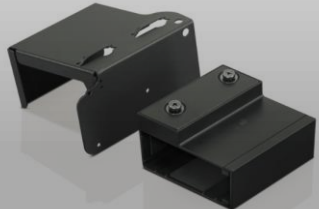
- Energy Saving– Pay \$5.89 less than a Tiny’s power bill
- Competitive Performance– Equivalent to Tiny
- Clean Desk Space– 1 cable for power + display



Nano Ecosystem



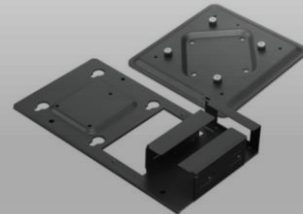
ThinkCentre Nano
VESA Mount



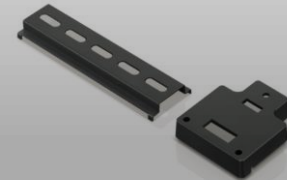
ThinkCentre Nano
Monitor Clamp I & II



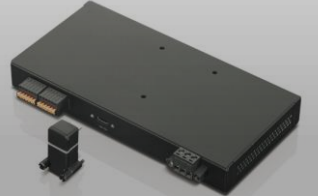
ThinkCentre Nano
TIO Cube



ThinkCentre Nano
Power Cage



ThinkCentre Nano DIN
Rail Mount



ThinkCentre Nano I-O
Expansion Box

ThinkCentre Tiny-in-One (TIO) Monitors for ThinkCentre Tiny

Lenovo

ThinkCentre TIO22 Gen4

Mainstream commercial TIO built with end-to-end protection



- 21.5" FHD
- 720p cam with VoIP
- Space saving footprint
- New thermal design for max heat dissipation
- ThinkShield security with ThinkShutter

ThinkCentre TIO24 Gen4

Mainstream commercial TIO built with end-to-end protection



- 23.8" FHD
- RBGIR or 1080p cam with VoIP + dual mic
- Space saving footprint
- New thermal design for max heat dissipation
- ThinkShield security with ThinkShutter

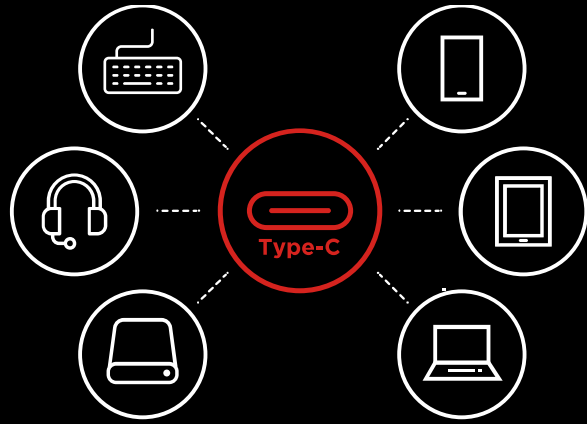
ThinkCentre TIO27

Space-saving TIO with sleek, borderless display with extra room for work and play



- 27" QHD
- RBGIR cam with VoIP
- +HDMI for video out
- New thermal design for max heat dissipation
- ThinkShield with ThinkShutter

ThinkVision Docking Monitors



USB-C docking Monitors provide a Single-Cable solution delivering a simple way to carry different signals, like USB data, video, audio, network and power via one cable, without compromising on the quality. Connecting to a full range of devices while maintaining a clear desk would be a breeze.



T32h/ T27h/ T24h



T32p/ T27p



T27hv/ T24m



P32p/ P27h/ P24h



P40w/ P34w

GOOD

BETTER

BEST

ThinkVision Collaboration - We Provide 2 VoIP Solutions

Built-in Camera



- 1080p IRRGB
- Windows Hello
- Dual microphones
- Noise cancellation
- Privacy Shutter
- Smart Traffic Light

Modular Camera (ThinkVision MC50)



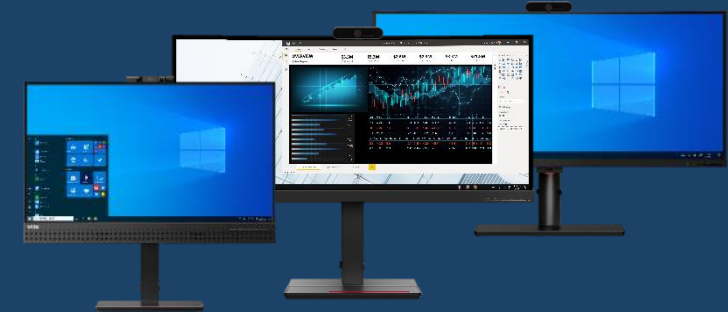
- 1080p RGB & Dual microphones
- Noise cancellation
- Privacy Shutter
- Smart Traffic Light
- Anti-thieve function
- Compatible for P&T Series (-20 Gen)



T22v/ T24v/ T10



P&T Series with MC50



T27hv/ P34w + P40w with MC50

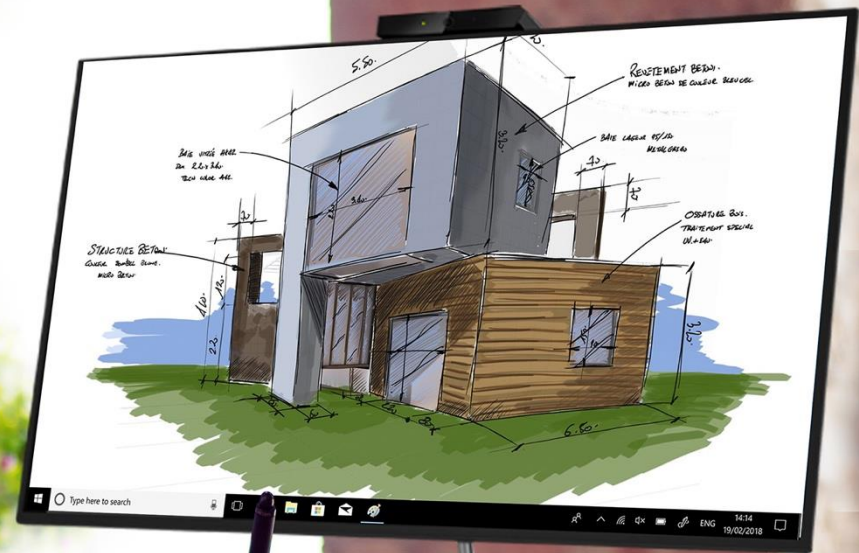
GOOD

BETTER

BEST

Lenovo

THINK ACCESSORIES: Working from Home & Mobile Office



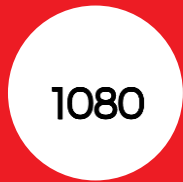
Lenovo 500 FHD Webcam

THE BUSINESS-READY WINDOWS HELLO WEBCAM



- Enjoy productive pixel-perfect high definition FHD 1080P video conferencing
- Mount in multiple positions thanks to its flexible mounting mechanism
- Effortless automatic login with Windows Hello 4.x facial recognition technology
- Plug-and-play USB connectivity for easy setup
- Capture everything with wide-angle 75° lens and pan/tilt/zoom controls
- Stay safe with a premium quality internally slicing privacy shutter
- USB Type C to A connections support any PC or notebook
- Extra-long 1.8m replaceable cable
- UVC certified ensures compatibility with any video conferencing software

Suggested Price: \$59.99
Country Availability: Worldwide
Ship Support: Available Now
PN: 4XC0V13599



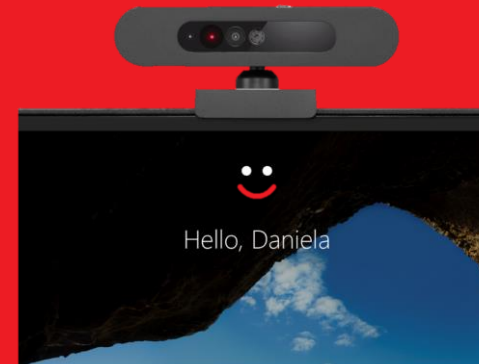
High Resolution with
FHD



Flexible Mounting and Privacy
Mechanism



Automatic Login with
Facial Recognition



Lenovo[™]

Lenovo Pro Stereo Wired VOIP Headset

HEAR AND BE HEARD LIKE NEVER BEFORE



- Stay connected via USB or 3.5mm analog
- Future-proof with Skype for Business and Microsoft Teams Certifications
- HD Voice, Noise Cancelling Microphone
- Based on Jabra Evolve 30 ID – USB, 3.5mm analog
- Noise Canceling Microphone
- Make Every Space a Conference Room
- Easy Call Management w/ in-line control box.

Suggested Price: \$79.99

Country Availability: Worldwide

Ship Support: now

PN: 4XD0S92991



Skype for Business Certified



Microsoft Teams Certified



Open Office Ready



Lenovo™



THINKPAD X1 ACTIVE NOISE CANCELLATION (ANC) HEADPHONES
(PN: 4XD0U47635)

UNCOMPROMISED SOUND QUALITY

Connectivity and Convenience

Integrated with Bluetooth 5.0 and USB Type-C, ThinkPad X1 ANC offers seamless collaboration and uninterrupted connectivity. The USB-C port also doubles up as an audio input. Loaded with features like Smart Voice Pickup, Quick Access Controls, and Skype optimization, the headphones can be paired with any compatible device via Bluetooth.



Lenovo 700 Ultraportable Bluetooth Speaker

THE FUTURE LOOKS SLIM AND SOUNDS AMAZING



- World's thinnest BT speaker at 165mm x 75mm x 11mm.
- Incredibly light and portable weighing in at just 145g.
- Boasts Bluetooth 5.0 with NFC and simultaneous connectivity support.
- Never-ending fun with rechargeable Lithium polymer battery (3.7V, 2430mAh.)
- Power up quick with fast charging (2hr charge = 12 hours playback*)
- Ultra-tough IPX2 splash-proof water resistance withstands the elements.
- Easy access touch controls for audio playback & VoIP controls.
- Use it on the move with the included leather strap.
- Compatible with Siri / Google assistant / Cortana.

Suggested Price: \$149.99

Country Availability: Selected Countries

Ship Support: Available Now

PN: 4XD0T32974



World's thinnest
speaker @ 11
mm thin



Rich audio
quality for work
and play



Streamlined
design & touch
controls



Lenovo™

LENOVO USB-C LAPTOP POWER BANK 14000 MAH



High capacity battery:
14,000 mAh



Charges power bank,
laptop & phone
simultaneously



Versatile connectivity:
USB-C, Slim-Tip, USB

- 48 Wh battery performance (14000 mAh)
- Fast recharge time at <2 hours to fully charge
- 365 days long stand-by life**
- Supports simultaneous charging between power bank, laptop and phone
- Supports USB-C, Round-tip & Slim-tip laptops via dongle + 2 extra USB ports for
- Perfectly portable at 0.64 lbs (290 g)



Lenovo Powered USB-C Travel Hub



6-in-1
6 Options with one connection



Slim, portable design with
cable management



PD3.0 Power Pass
Through

- 1 x HDMI2.0, 1 x VGA, single 4k@60Hz display
- 1 x USB-A 3.0, 1 x USB-A 2.0
- 1 x USB-C power pass through, works with USB-C 45W/65W power to charge Laptop
- 1 x RJ45, Gigabit Ethernet, WOL/PXE boot, MAC address Pass Thru on selected ThinkPad
- Cable management , portable design , ready for travel



Lenovo 65W USB-C AC Travel Adapter

ALL YOUR POWER NEEDS, IN ONE.



- Ultraportable, lightweight design perfect for frequent commutes and travel
- Effortlessly refuel your USB-C laptop or device on the go with a single adaptor
- Universal plugs that cover most regions and are safe to use and easily replaceable
- Set up quickly with symmetrical plugs designed to click into place regardless of direction
- Reliable PD 3.0 certified adjustable output voltages of 5V/9V/15V/20V
- Long 1.8m cable that detaches and stores with ease
- Convenient carry pouch for travelers included

Suggested Price: \$69.99

Country Availability: Selected countries

Ship Support: May 18th, 2020

PN:

40AW0065WW (UK/US/AU/EU plugs)

40AW0065EU (EU plug only)



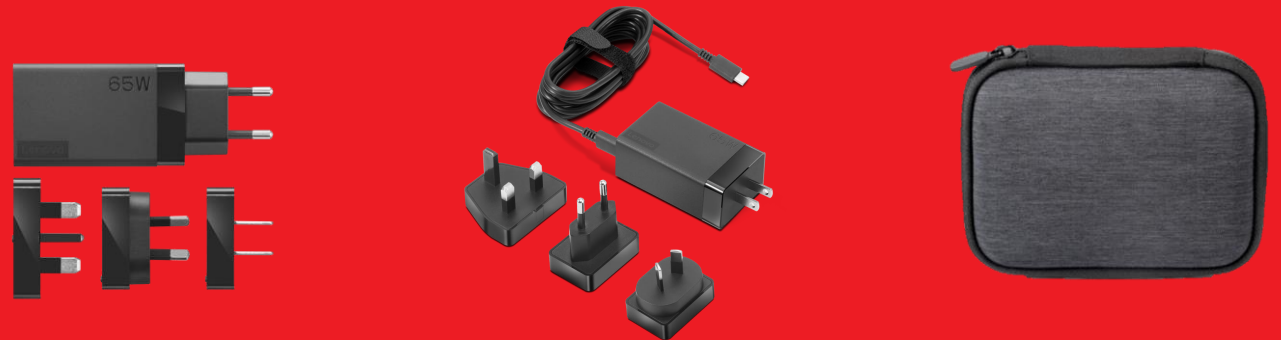
Multi-plugs solutions
in box for travel



Wide compatible
range from laptops to
smartphones



Multi-plugs solutions
in box for travel



Lenovo™

Lenovo Go

Tech Accessories Organizer

DEVICE STORAGE, LIKE NEVER BEFORE

- Portable compact case to easily carry and protect your accessories
- Slim enough to fit in your bag and light enough to carry on the go
- Compression-molded rigid outer walls to protect your devices
- Easy seal water-repellent zippers prevent liquid from entering
- Double zippers with easy-grip pullers and 270-degree zip-around for effortless access
- Soft mesh interior pockets make it easy to store items on the go
- Low-profile exterior handle on the top edge for convenient carrying
- Supports your Lenovo Go mouse, in-ear earphones, and power bank
- Fits key essentials such as your power adapter, smartphone, pens, small notepad, and other remote work accessories.
- Eco-friendly: made with recycled PET, equivalent to four plastic bottles



Water-repellent
exterior and zippers



Slim and compact



Protective and
functional
construction



Lenovo
Go
Work Your Way

PN : Commercial 4X41E40077
Consumer GX41G97371

Lenovo Professional Ultraslim Wireless Combo

A STYLISH RELIABLE COMBO FOR TRUE PROFESSIONALS.

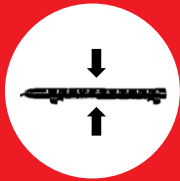
- Sleek and contemporary design in iron grey color
- 2.4 GHz wireless connection using 1 nano USB dongle
- Full size 2.5 zone keyboard with language layout options
- 3-button mouse with up to 3200 adjustable DPI resolution (3200, 1600, 800)
- Integrated rechargeable battery for the keyboard
- 2 x AA batteries for the mouse
- Backed with 1 year warranty

Suggested Price: \$99.99

Country Availability: Worldwide

Ship Support: Available Now

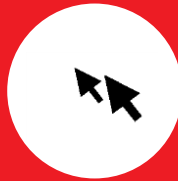
PN: 4X30T25785 - 4X30T25807



Aspirational
ultraslim
design



2.5 zone layout
with language
layout options



High precision
mouse Up to
3200 DPI



Lenovo™



**High Performance
for Enterprise Customers**

ThinkPad Universal Thunderbolt™ 4 Dock

- Supports up to 4 x 4K or 8K monitors*
- Four video ports: 2 x DP 1.4, 1 x HDMI2.1, and 1 x Thunderbolt™ 4 Downstream port (40Gpbs)
- Five USB ports: 4 x USB 3.1 Gen 2 (10Gbps, 1 x always-on charging), 1 x USB-C (10 Gbps, 5V x 3A)
- vPro support for Intel Enterprise Security Solution
- Dynamic power charging up to 100W with 135W power adapter in box
- Industry Leading high performance Universal Solution with vPro supported



**Ultra Performance
with High Power Charging**

ThinkPad Thunderbolt™ 4 WorkStation Dock

- Supports up to 4 x 4K or 8K monitors*
- Four video ports: 2 x DP 1.4, 1 x HDMI 2.1, and 1 x Thunderbolt™ 4 Downstream port (40Gpbs)
- Five USB ports: 4 x USB Gen 2 (10Gbps, 1 x always-on charging), 1 x USB-C (10Gbps, 5V/3A)
- vPro support for Intel Enterprise Security Solution
- Max 230W charging to Mobile Workstation for ultra performance mode
- Universal One Docking Solution for ThinkPad Classic laptops and Mobile Workstation with Split Cable

ThinkPad

* Actual display resolution is subject to your system's video output capability.

Portable dock
ideal for employees
on the move



Lenovo USB-C Mini Dock

- Supports max 1 x 4K monitor*
- Two video ports: 1 x HDMI 2.0, and 1 x VGA
- Three USB ports: 1 x USB 3.1 Gen1, 1 x USB 2.0, and 1 x USB-C 3.1 Gen 1

One-cable docking
solution for enterprise
networking



ThinkPad USB-C Dock Gen 2

- Supports up to 2 x 4K or 3 x 1080p monitors*
- Three video ports: 2 x DisplayPort 1.4, and 1 x HDMI 2.0
- Six USB ports: 2 x USB 2.0, 3 x USB 3.1 Gen2 (10 Gbps, 1 x always-on charging), and 1 x USB-C (10 Gbps, 5V/3A)

One cable solution with
intelligent FW Update
Tool



ThinkPad Universal USB-C Dock

- Supports up to 3 x 4K monitors*
- Three video ports: 2 x DisplayPort 1.4, and 1 x HDMI 2.0
- Six USB ports: 2 x USB 2.0, 3 x USB 3.1 (10 Gbps, 1 x always-on charging), and 1 x USB-C (10 Gbps, 5V/3A)
- Dynamic Power charging to NB as 65W, max 100W

Best-suited for
mixed-PC or shared-desk
environments



ThinkPad Hybrid USB-C with USB-A Dock

- Supports up to 2 x 4K monitors*
- Four video ports: 2 x DisplayPort 1.4 and 2 x HDMI 2.0
- Six USB ports: 2 x USB 2.0, 3 x USB 3.1 Gen2 (10 Gbps, 1 x always-on charging), 1 x USB-C (10 Gbps, 5V/3A)
- Port replication to non-USB-C laptops through the USB-C to USB-A adapter

ThinkPad

* Actual display resolution is subject to your system's video output capability.

ThinkVision

THINKVISION M14

USB-C MOBILE MONITOR

Lenovo



ThinkVision M14

Mobile Monitor Use cases :

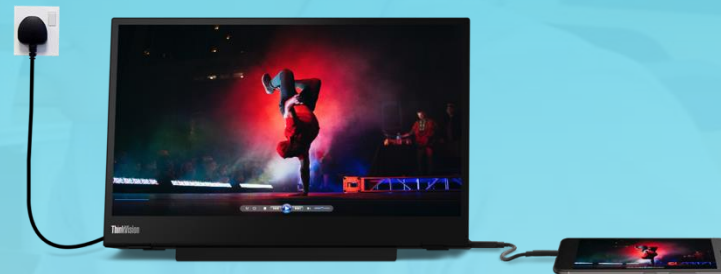


WITH A LAPTOP

A travelling executive, making a quick pitch in an airport lounge, could benefit from a second display running off a laptop* that will help them make an effective presentation to a potential business partner.

The ThinkVision M14 mobile monitor can also enhance an office setup as an additional monitor on the side and can be used to charge the laptop it is connected to using its power pass-through feature.

*Compatible with notebooks of any screen size that come with advanced USB Type-C port. Recommended external adapter will be required to power monitor.



WITH A SMARTPHONE

A smartphone screen can be duplicated* with the ThinkVision M14. An additional monitor can come in handy if work needs to be done on the go. Also, streaming video on a larger display is simply better.

*Must be DP 1.2 Alt Mode and PD 2.0 compatible. External power supply through recommended charger required.

Lenovo ThinkVision M14 mobile monitor is made for remote productivity.

SLASHGEAR

Lenovo Mobile Displays

MWC2019
Super Star

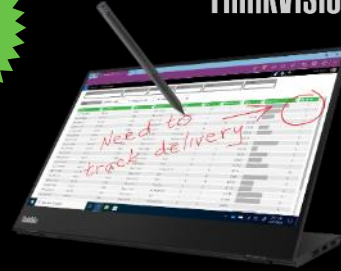
ThinkVision **M14**



Launched

CES2021
Award

ThinkVision **M14t**



Launched

Up-
coming

ThinkVision **M15**



GA: Jun. 2021

Common Features

- Light and slim for mobile usage. ThinkVision Mobile Family ID:
Easy tilt without extra stand or bracket, height adjustment, mounting support
- 2 USB Type-C with Power Pass Through ▶

Key Features

- 14" FHD, 72% NTSC
- **Extreme** light (598g*) and slim (monitor head 4.4mm)

- 14" FHD, 72% NTSC
- Light (698g*) and slim (monitor head 4.6mm)
- Fantastic **touch** experience 10 points touch with 4096 pressure level active pen support, touch OSD
- **Auto-rotation w/o SW&driver**

- **15.6"** FHD, 45% NTSC
- Light (850g*) and slim (monitor head 6mm)

**Actual weight may vary due to components, manufacturing process and options.*

TGX

Perfect Hybrid Office
solution for Power Users

CONNECTING

THE ENTERPRISE



QUADRO
RTX™

Lenovo™

To begin, here's a recommended configuration to get you started:

DESKTOP WORKSTATION



Thinkstation P350 Tiny Intel® Core™ i9-9900,
NVIDIA® Quadro® P1000, 256GB PCIe M.2 SSD

MOBILE WORKSTATION



ThinkPad P1

9th Gen Intel Core i9, NVIDIA Quadro T2000,
32GB RAM, 512GB PCIe M.2 SSD

ThinkPad P15

Intel Xeon® E-2176M, NVIDIA Quadro T2000,
32GB RAM, 512GB PCIe M.2 SSD

ThinkStation



ThinkPad

How Does it Work?

Host + Client Modules...



HOST

- Uses NVIDIA Quadro GPU for Capturing Pixels + Encoding + Decoding
- Leverages NVIDIA's Special Purpose h.264 chip for Max. Performance
- Supports NVIDIA Software to Virtualize the GPU Across Multiple VM's
- Available for Microsoft Windows & Linux Operating Systems



CLIENT

- Uses NVIDIA GPU on Client for Decoding
- Max. Performance with NVIDIA Quadro GPUs end-to-end
- Ultimate Experience for Large Multi-Monitor 4K Displays
- Support for Microsoft Windows, Linux & Mac Operating Systems

Powered by



Security Solutions for the Hybrid Office

ThinkShield

**COMPREHENSIVE
AND
CUSTOMIZABLE
FOR THE MODERN
WORKFORCE**

Lenovo's comprehensive end-to-end security provides advanced solutions in the forms of Built-in Platform security and device protection, threat + data protection, and security management tools that help protect critical business information.



I. PLATFORM SECURITY

Included standard security features for protection "right out of the box"



II. DEVICE PROTECTION

Enhanced hardware security and services for an additional layer of protection for devices



III. THREAT + DATA PROTECTION

Software and cloud-based solutions that seamlessly integrate with devices to shield from cyber threats



IV. SECURITY MANAGEMENT

Solutions that provide better ways to deploy, manage and monitor IT assets



Lenovo's 8 modes of device authentication (multifactor)

Network Security
Based on IP address

GPS Security
Based on geo-location

NFC
Secure NFC tap-to-logout

Facial Recognition
IR Cameras for Windows Hello



Bluetooth
Phone proximity authentication

Password & PINs
Intel Authenticate Secure PIN
Win 10 typed & visual PINs

Match on Chip Fingerprint reader
with Quantum Matcher Anti-spoofing
(detects fake fingerprint images)



Smart Card
Industry standard physical smart card insertion



Introducing Privacy Guard with Privacy Alert

Protect yourself from shoulder surfing!

- Lenovo's built in ePrivacy filter
 - With IT Administrator policy enforcement
- Glance gaze* detection proactive "blind-spot" notification
- Glance presence* detection: locks the system when away



*Presence and Gaze detection require IR camera
Gaze detection offered on PrivacyGuard models

ThinkShield Portfolio

ThinkShield PLATFORM

Webcam Privacy Shutter

Secure Wipe

Self-healing BIOS

Windows 10 Hello

WiFi Security Partnered
with Coronet

Tamper Switch

SecurityEngine

ThinkShield DEVICE PROTECTION

Privacy Guard
(ePrivacy Filter)

Transparent Supply Chain

Shoulder Surfing
Protection w/ IR Camera

Trusted Device Setup

Match on Chip Fingerprint

Intel vPro HardwareShield

Microsoft Secured-core
PC Enablement

ThinkShield THREAT + DATA PROTECTION

AI Endpoint Protection
partnered with
SentinelOne

Browser Sandboxing
partnered with Bufferzone

Data Encryption *partnered*
with WinMagic

Data Backup *partnered with*
Carbonite

ThinkShield SECURITY MANAGEMENT

Lenovo Patch

Lenovo RSVP by Absolute

Cloud Recovery

Microsoft Autopilot

MobileIron MDM

Absolute Persistence



Lenovo **Premier Support**

ADVANCED ENGINEERS.
END-TO-END CASE MANAGEMENT.
FASTER, FIRST-TIME RESOLUTION.



Remote workers are facing (new) issues...

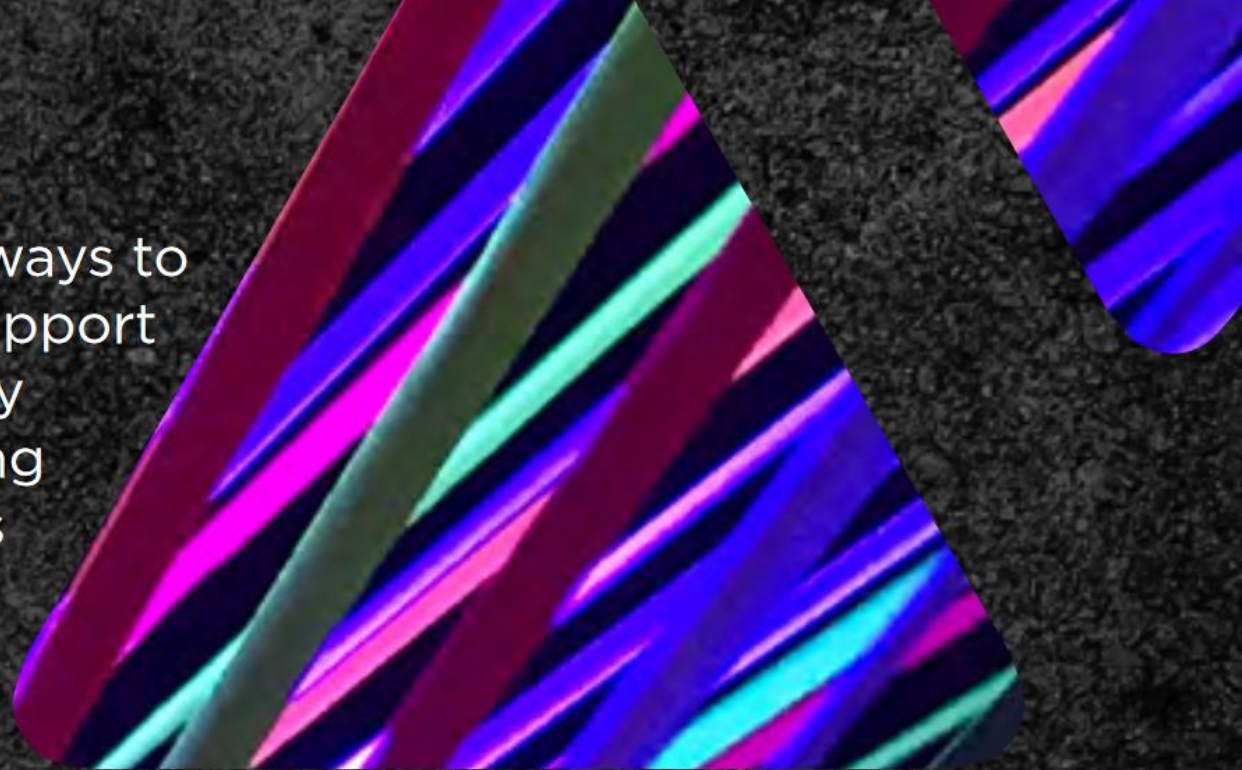
- I have a new machine and now what? (OOBE)
- My VPN doesn't work...What should I do?
- I cannot connect to my external monitor...
- Kids changed outlook settings, can't get it fixed back
- My WiFi / video doesn't work / cannot connect to it
- Laptop won't switch on...
- No audio / No camera....Firmware issue?
- How to use the docking station?

Lenovo Support has received peaks of calls up to 300% during the lockdown, and up to 50% of those calls were not HW related

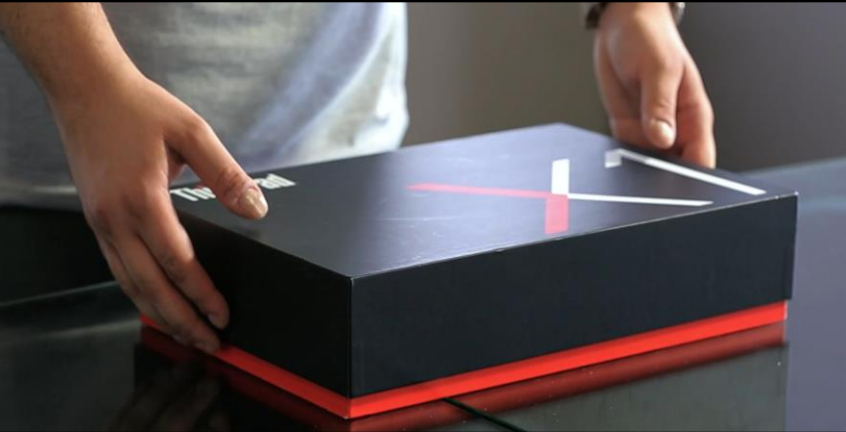
Why Premier Support?

As IT budgets contract, you need to reduce complexity and operational costs and find ways to increase efficiency from your in-house IT support teams. Lenovo™ Premier support can help by managing your routine support tasks, freeing up your IT staff to focus on strategic efforts that move the organization forward.

We can boost your end users' productivity and limit their downtime with direct access to elite Lenovo™ engineers who provide unscripted, advanced hardware and software support. Lenovo™ Technical Account Management teams also provide end-to-end case management for faster, hassle-free case resolution.



Premier support – Keeping you going



Support from Day 1...

- Helps end-users set up their machines
- First boot support provided if needed
- Setup support includes peripherals

and in daily usage...

- Advanced troubleshooting from dedicated Lenovo engineers
- Many issues are fixed remotely on the phone
- Includes software support for typical end-user questions



... with fast onsite service wherever you are.

- Parts & Labor prioritization for an Next Business day response
- Spans office and remote locations*
- Minimizes disruptions to employee productivity



Peace of mind is there around the clock and around the globe

Lenovo Premier Support is your 24/7/365 remote help desk with dedicated, unscripted, advanced technical support, including comprehensive hardware, peripheral, and OEM software support.¹⁰

91%

of Premier Support customers indicate they **would purchase again.**¹¹



Global coverage in more than 100 markets with local language support

88%

of Lenovo customers indicate they **would recommend Premier Support** to a peer.¹¹



Warranty claims including parts and labor, onsite labor,^{12,13} and parts prioritization^{13,14}



Single point of contact for simplified end-to-end case management



Comprehensive suite of reporting tools for your IT team^{13,15}

Smarter
technology
for all


Lenovo

Lenovo Sustainability : The Promise for a Greener World

A close-up photograph of several stacked cardboard boxes, with the 'ThinkPad' logo visible on the side of each. In the upper left corner, there are several dried bamboo leaves, symbolizing sustainable packaging.

Leader in innovative packaging

Our lighter bio-based (bamboo and bagasse) packaging reduces the overall package size, resulting in a 6.7% efficiency improvement in transportation CO2 emissions.

A close-up photograph of a green printed circuit board (PCB) with various electronic components and traces.

Low temperature solder

Lenovo uses a new and more sustainable process to build stronger, more reliable devices and conserve energy.

Lenovo

A background of a purple, textured surface that looks like torn paper or a rough fabric.

A leader in sustainability

CDP Ranking: Leadership Level | 100 Most Sustainable Corporations in the World Index | Rated AA on 2018 Hang Seng Corporate Sustainability Index

A close-up photograph of many clear plastic bottles, some of which are crushed or broken, representing recycled content.

Closing the loop

We use post-consumer recycled content in laptops, desktops, workstations, monitors, and accessories and are introducing closed-loop process for some products.

A solid green background with a framed image of a lush forest landscape. In the foreground of the framed image, there is a small model of a forest with a tent and people, representing CO2 offset services.

CO₂ Offset Services

As the first in the industry we offer CO₂ Offset Services for customers that wish to purchase their PC products CO₂ compensated over the device's lifecycle

CO2 Offset Services

It's incredibly simple to offset CO2 emissions with Lenovo:

- Choose your CO2 Offset option (integrated into the Serial Number) when ordering eligible devices.
- Once products are shipped, Lenovo reports to its official CO2 Offset partner.
- Lenovo's CO2 Offset partner finalizes the transaction and issues a unique certificate with specific HW Serial Number(s), which Lenovo provides to your organization.

We understand that for businesses, ensuring sustainability and reducing the global carbon footprint of operations is a top priority. To assist customers on their sustainability journey, Lenovo partners with leading certified providers of CO2 Offset Services.

Lenovo CO2 Offset Service supports several different initiatives which include new or extensions of existing projects, windmills, solar cells and biomass energy among others. Forestation and forest conservation are also areas we are looking into for the future.



First-Of-Its-Kind DEKRA Validation in Sustainability

Through this service, Lenovo customers have offset more than 350,000 metric tonnes of carbon dioxide associated with the purchase of their IT equipment worldwide.

As the demand for environmentally-conscious products and services grows, Lenovo announced the DEKRA validation of its global CO2 Offset Service. Conducted by the Business Assurance Services unit of this international testing, inspection and certification organization, this is the first DEKRA audit of its kind for an electronics manufacturer. Consisting of an in-depth assessment of Lenovo's carbon footprint calculation process, DEKRA has validated the accuracy of the related claims and verified the service's CO2 compensation process.

Originally launched as a pilot in the Nordics in 2019, the now globally available Lenovo CO2 Offset Service helps companies offset the carbon emissions associated with their Lenovo hardware through one of several ecological projects supported by the United Nations.



Promise for a Greener World

ThinkVision

ThinkVision Monitors are dedicated to creating a greener, more sustainable world and **reducing carbon emissions**. In addition to having products that are **UL GREENGUARD certified**, we constantly push our limits by using **recyclable materials** on our monitors, designed to reduce environmental impact.


¹[What is Sustainable Packaging?](#)
[Our Vision](#)

85% 

Among the range of plastic materials we are using for our products, **up to 85% plastic resins** are categorized as **recycled plastics (close-loop PCC)**.

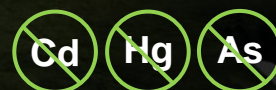
90% 

Sustainability is not necessarily a finish line, but rather a **continuous process of improvement**¹. We are dedicated to the **development and use of sustainable packaging**, by continuously optimizing the package design, choice of materials, processing, and life-cycle. So far, a selected scope of our products has been shipped with green packaging with **up to 90% recyclable materials**.

80% 

We support the **circular economy** by expanding the use of post-consumer recycled content and using **closed loop materials (up to 80%)** sourced from **end-of-life information technology equipment (ITE)** and products.

100%





To help end users **build a healthy indoor environment** is considered as our responsibility. That's why we managed to make sure **100% of our products** are certified with **UL GREENGUARD GOLD**, which has a high standard on the **emission of harmful airborne chemicals (VOCs)**.

From 2019 to 2021,
11,316 tons of recycled plastics were used in manufacturing ThinkVision monitors.

From 2015 to 2021,
50,000,000 monitors containing recycled plastics were shipped.



Smarter
technology
for all

Lenovo

**Connect with Lenovo. We're experts
at breaking down barriers and building
smart solutions. When you're ready,
we're here to help.**

Contact your Lenovo Account Representative
or local Business Partner.

Visit www.lenovo.com/FlexibleWorkforce

Lenovo



thanks.

**Smarter
technology
for all**

Lenovo

Contacteer ons via:

- products@inetum-realdolmen.world
- Uw vertrouwde contactpersoon bij Inetum-Realdolmen

Bestel online via:
store.inetum-realdolmen.world

inetum 
realdolmen
Positive digital flow

inetum.world

FRANCE | SPAIN | PORTUGAL | BELGIUM | SWITZERLAND | LUXEMBOURG | ENGLAND |
POLAND | ROMANIA | MOROCCO | TUNISIA | SENEGAL | CÔTE D'IVOIRE | ANGOLA |
CAMEROON | USA | BRAZIL | COLOMBIA | MEXICO | RP OF PANAMA | PERU | CHILI |
COSTA RICA | DOMINICAN REPUBLIC | ARGENTINA | SINGAPORE | UAE

