



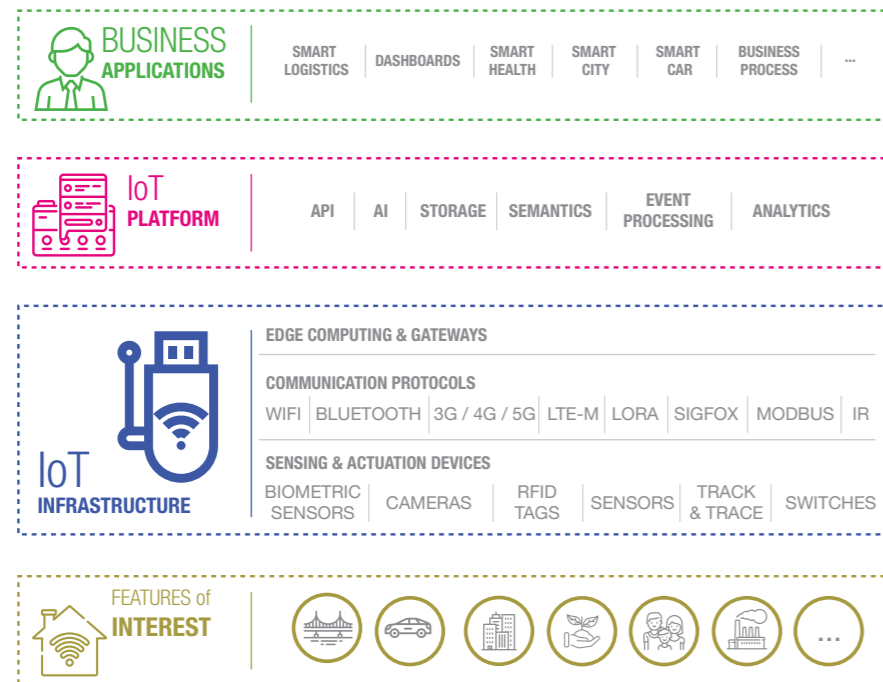
REALDOLMEN HELPS TO MAKE YOUR WORLD SMARTER

The Internet of Things (IoT) often remains an abstract concept. Yet IoT can be a real enhancement to your organization. Because of the "things" aspect of IoT, it is possible to make IoT tangible. We are in a position to demonstrate the possibilities of IoT through use cases and experience, making the world of IoT more concrete.

All the people connected through the Internet make up an important network together. By integrating the Internet of Things, the network also enters the dimension of "things". That leads to the creation of platforms where people and "things" work together, reinforce each other and ultimately, make the world a "smarter" place.

CHALLENGE

The power of the IoT lies in extracting, collecting and using valuable data. Unfortunately, IoT is a complex matter. It requires a reference architecture that can link the various elements and be ready to respond to rapid IT and business developments. Additionally, the range of possibilities is so vast that identifying your own applications can be a challenge. The hype has evolved into a phenomenon with significant impact, offering infinite opportunities and areas of application.



CONNECTION LEADS TO INCREASED SITUATIONAL AWARENESS

Getting started with IoT

To be able to transform the hype into practical implementations, Realdolmen also needed to integrate and concentrate its expertise within the various areas. Different experts have been brought together to form the current "Realdolmen IoT Team". The R-IoT Team has already made use of its integration skills multiple times, its understanding of how data is converted into insights and visualized, and its infrastructural knowledge and business expertise in several major Belgian reference projects.

Realdolmen is one of the few ICT partners in Belgium that can handle all aspects of an IoT project.

HOW WE CAN HELP YOU

INSPIRE YOU, BRING IOT TO LIFE

DO YOU WANT TO SEE WITH YOUR OWN EYES WHAT IT IS ALL ABOUT?

In our IoT lab in Ghent you can view a range of functional IoT devices with their dashboards, all of which can be implemented as part of a customized IoT solution. At present, we have an exhibition featuring ten use cases. Each use case relates to one aspect of a smart city/company. Small exhibits show what a smart city or company could look like.

In addition, it is also possible to meet the architects behind various IoT solutions, who can offer advice on everything that can be done with IoT.

Based on this scan, our architects will perform a high level analysis of possible IoT based solutions. We create recommendations, an estimated budget and roadmap, fully tailored to your organization.

READY? ACTION!

HOW DO I INTRODUCE AND INTEGRATE IOT WITHIN MY ORGANIZATION?

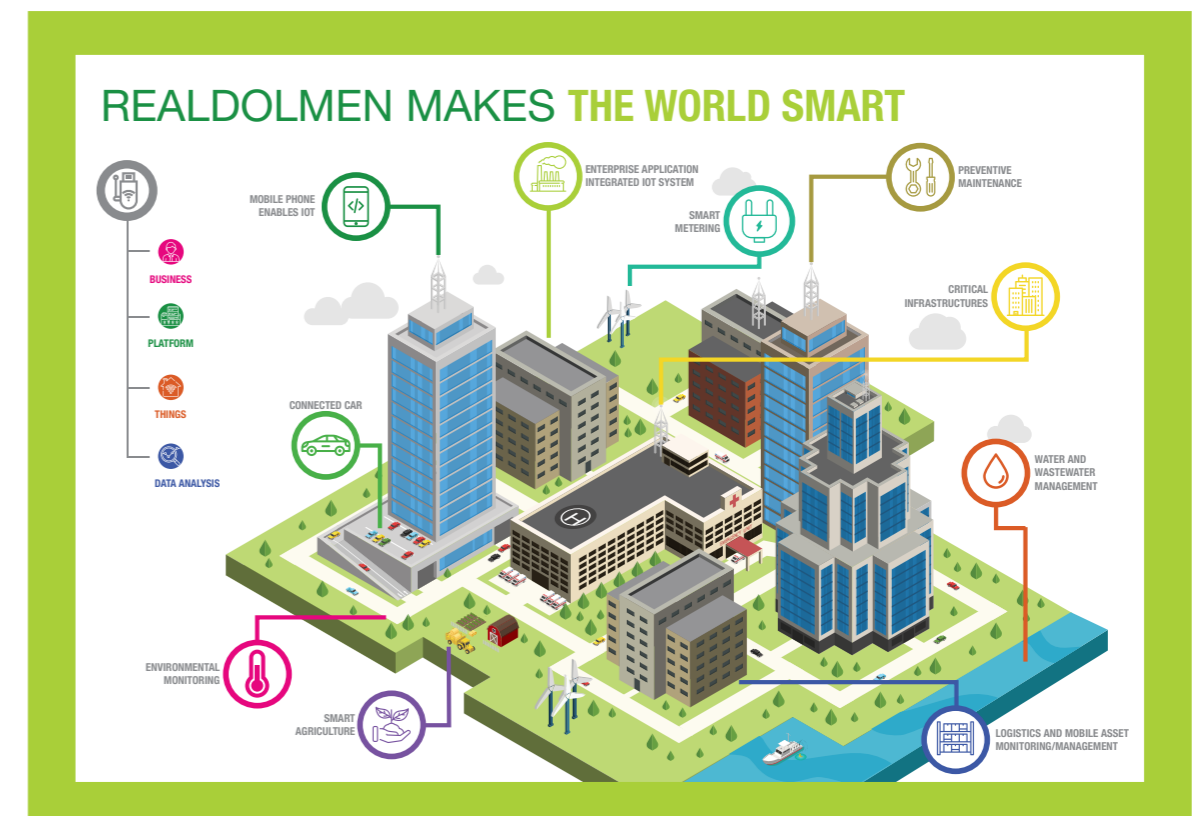
Realdolmen also handles IoT projects. During these projects, our experts help you with analyses, design, development and management of the complex IoT system.

We can further develop the available platforms so that they are fully tuned to meeting your needs. Realdolmen has also developed its own platform that can be implemented quickly and easily in Azure, AWS, Google, IBM, etc. It is modular and therefore easy to personalize according to your project and wishes. It is also compatible with almost all devices and data types, and scalable (Cloud, VPC, Hybrid). We work with partners (in an ecosystem) to construct your end-to-end solution.

MAKE IT REAL

WHAT ARE THE OPTIONS FOR MY ORGANIZATION?

Our architects are eager to help you explore this by carrying out an IoT Scan. Together with your employees, we will investigate the added value of IoT for a few essential processes within your organization.



Do you want to meet the Internet of Things in person?

You are welcome to come and visit our IoT lab in Ghent, or invite our architects to perform an IoT Scan and Roadmap.

Please contact us at info@realdolmen.com. We will contact you as soon as possible.

You can, of course, also contact your Customer Executive.

© All rights reserved by
Realdolmen NV Huizingen, 2018

